



MA PACIFIC
DEDICATED OEM SUPPLIER

PROVIDING ENGINEERED SUB-ASSEMBLIES AND PARTS TO OEMs



**40% of NA Pacific is
American owned and
60% is Canadian owned**

**Our Corporate office is
located in Drummondville,
Quebec, Canada**



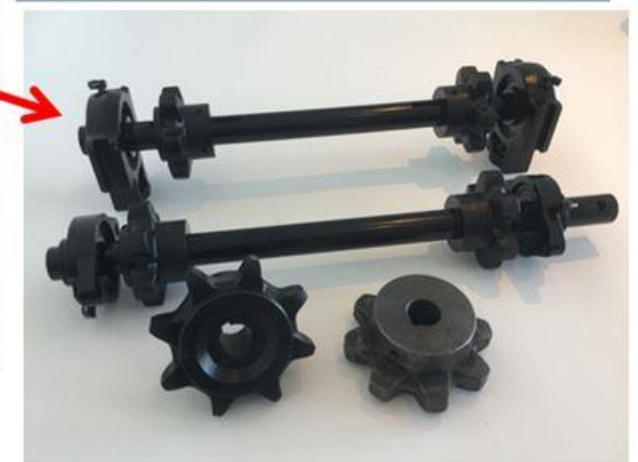
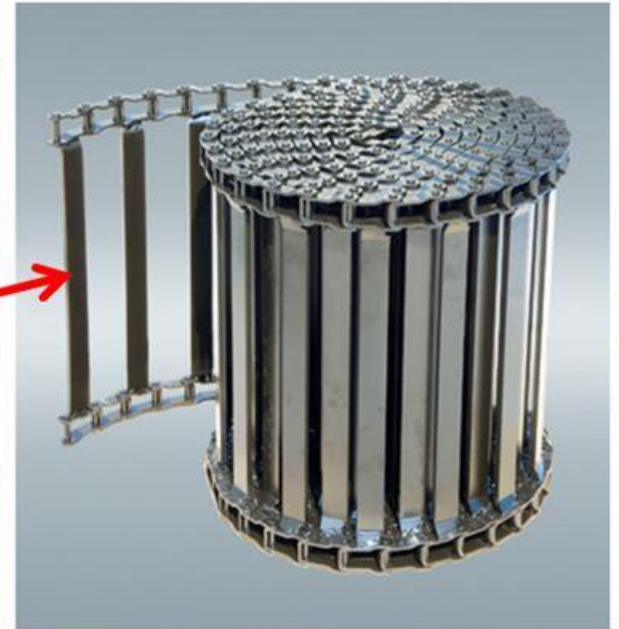
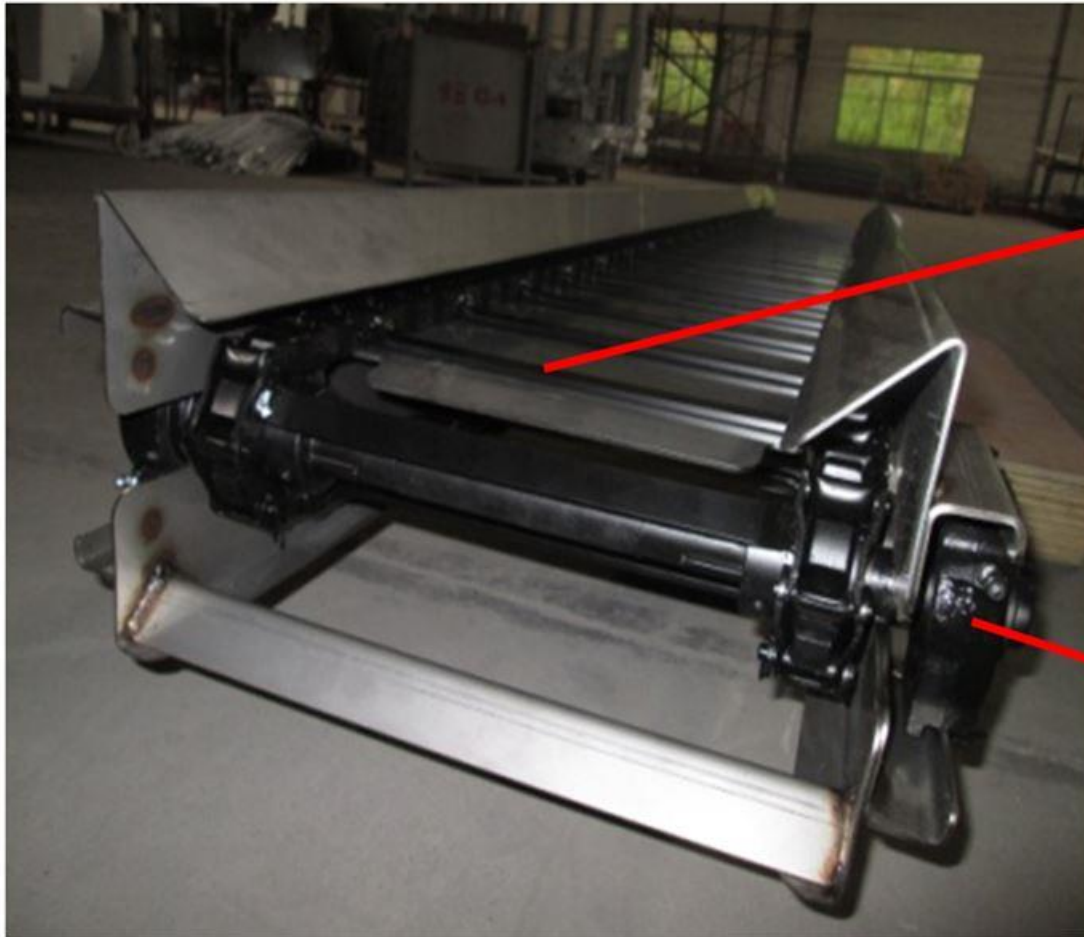
PROVIDING ENGINEERED SUB-ASSEMBLIES AND PARTS TO OEMs

Today we provide engineered sub assemblies, packaged kit solutions, controls, and logistics solutions (packaging/crating/consignment inventory) in an effort to add value to the supply chain and remove unnecessary costs in the middle.

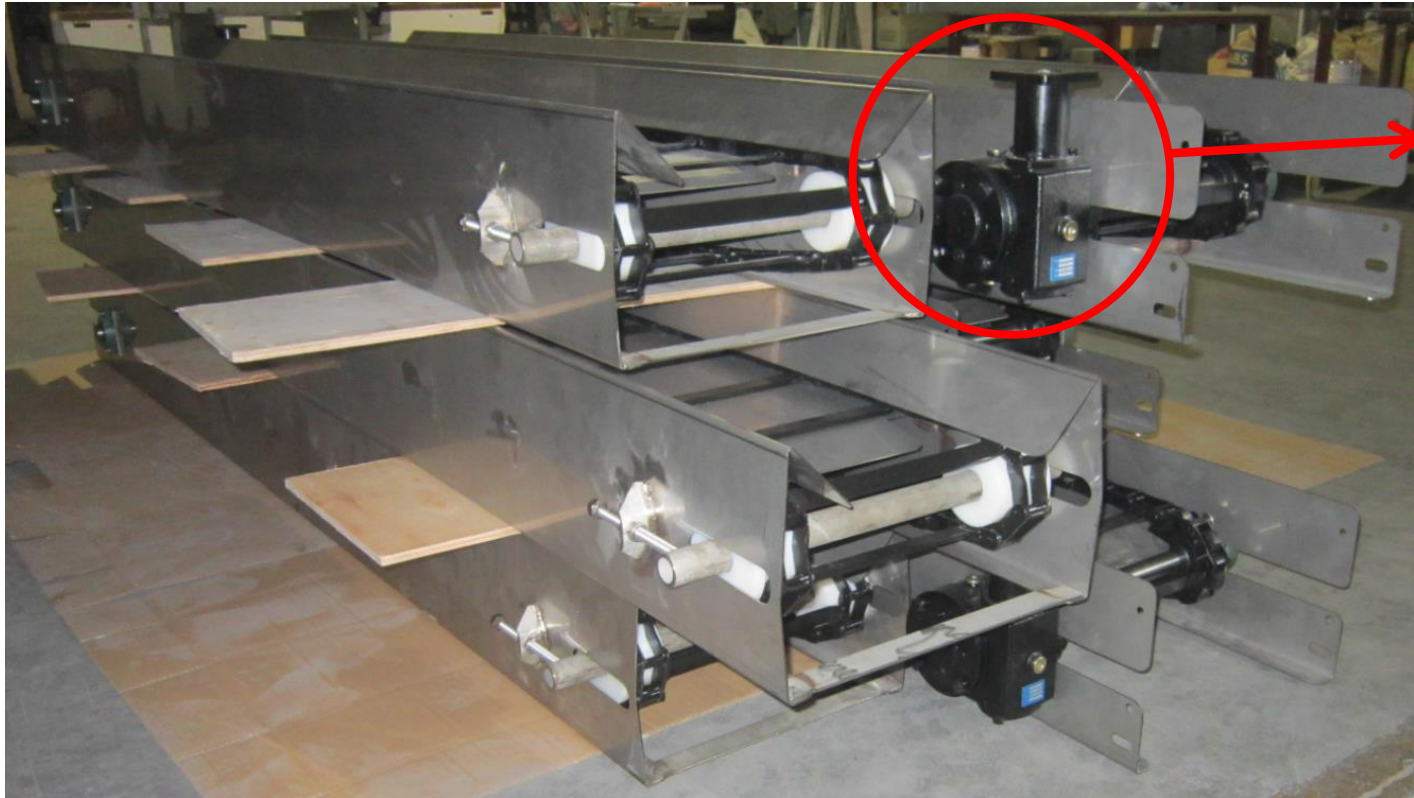
Core Competencies

- ***Product Development & Engineered Sub-Assemblies***
- ***Manufacturing and Quality Control Processes***
- ***Production Scheduling and Inventory Management***
- ***Multi-Lingual Team***

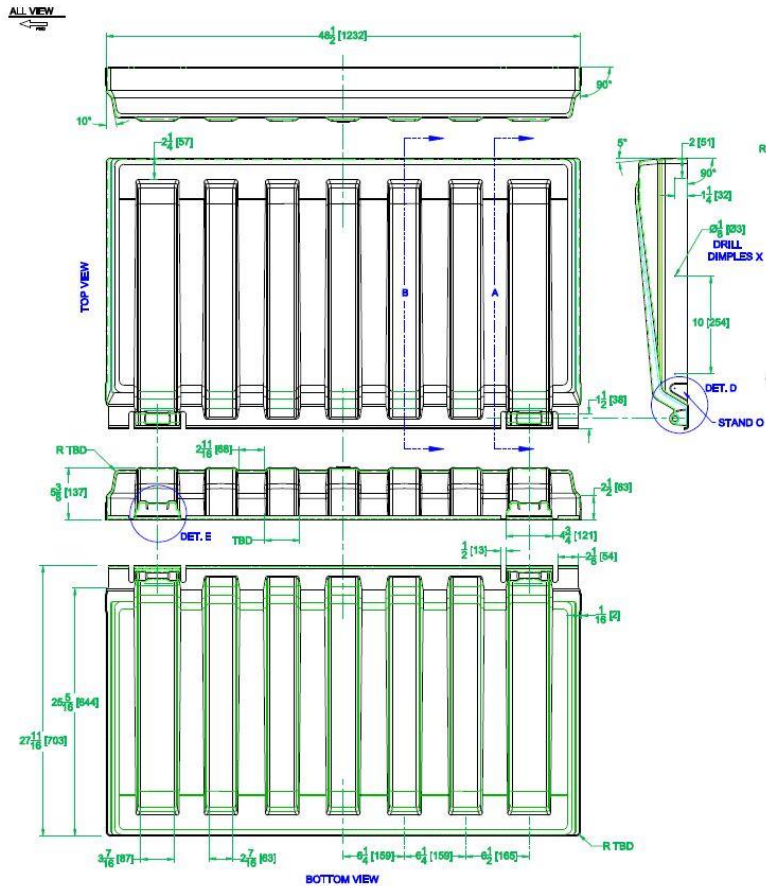
We are **Sub Assembly driven** because this is where we feel we can add the most value and separate ourselves from competitors – of course it also allows us to offer an extensive range of OEM parts

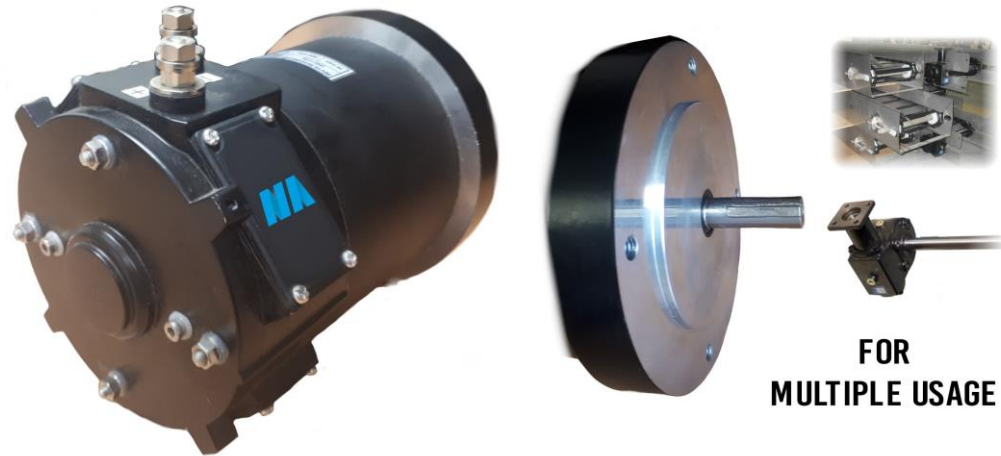


Product Development & Engineered Sub-Assemblies



Product Development





1/2 HP DC MOTOR
12 VOLTS
1800 RPM
1P 65
WEIGHT 28 LBS

ELECTRIC MOTORS



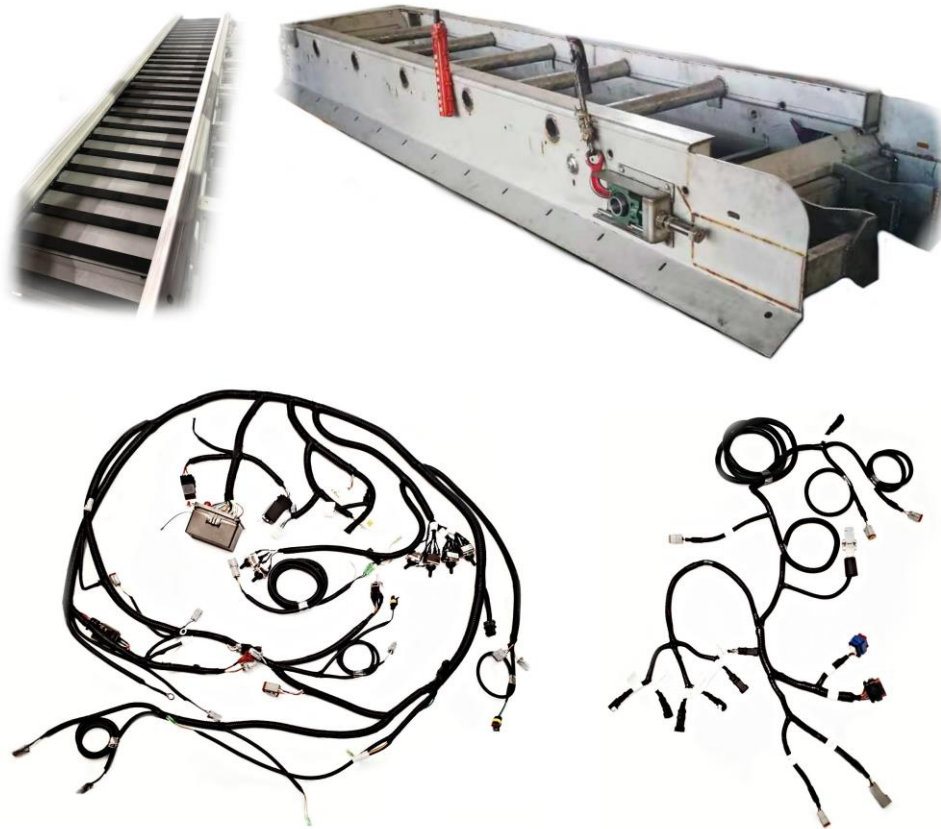
GEARBOXES



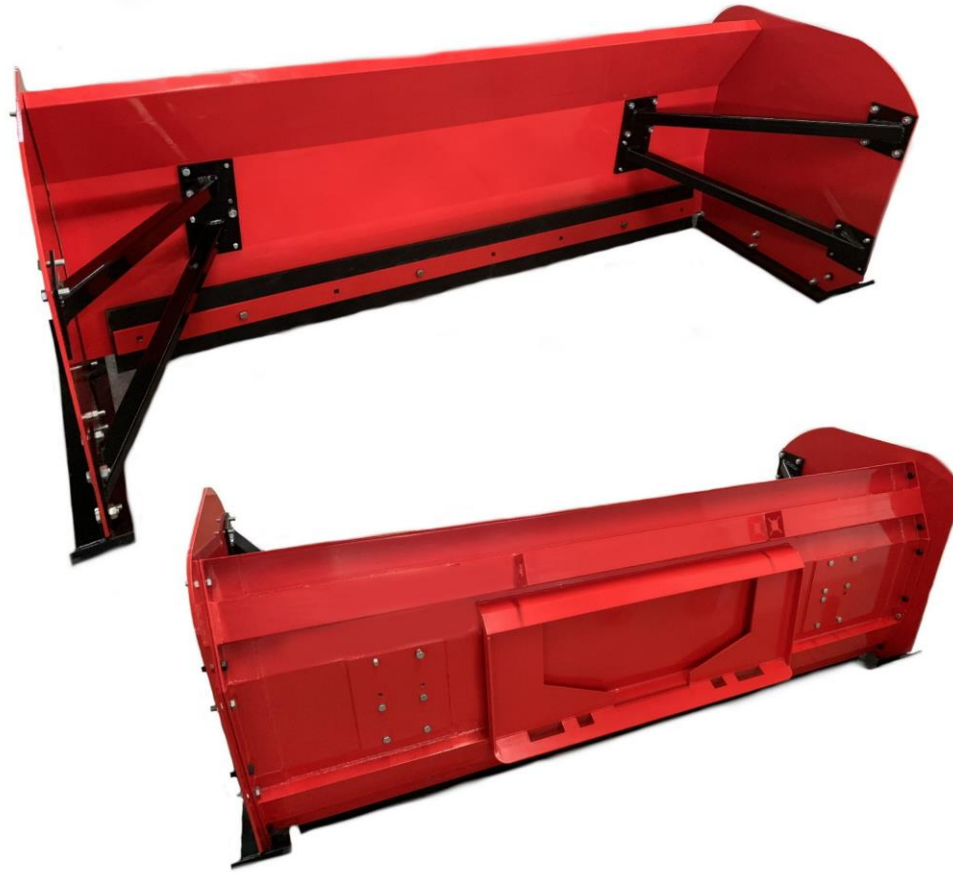
CHAIN AND SHAFT SPROCKET KITS



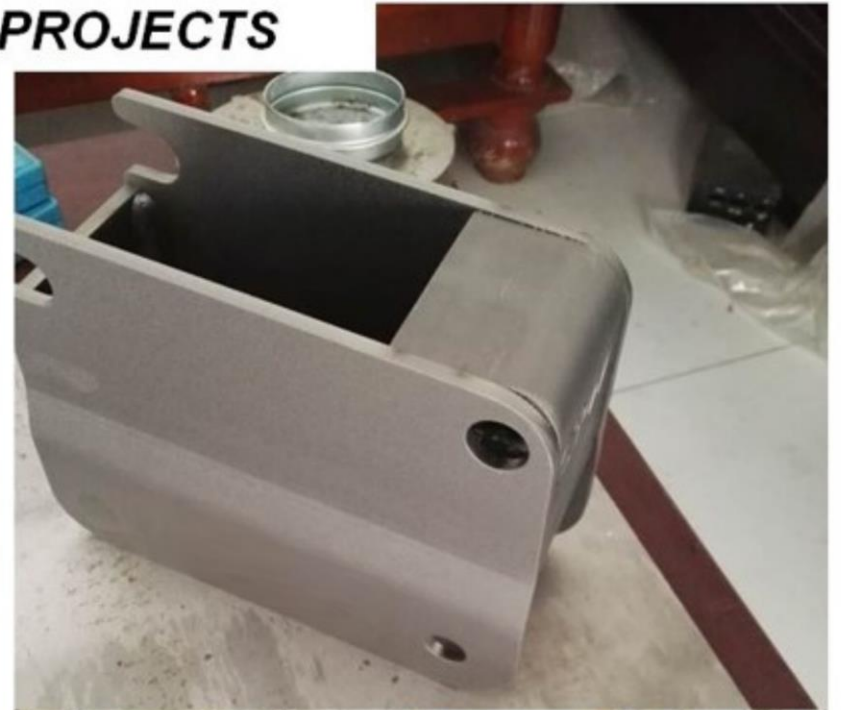
CONVEYOR AND HARNESS



SNOW PUSHER PLOWS



SPECIALIZED PROJECTS



Conveyor Gearboxes



Barn Curtain Gearmotors



Harnesses



Bearings & Push Pulls



Electromagnetic Clutches

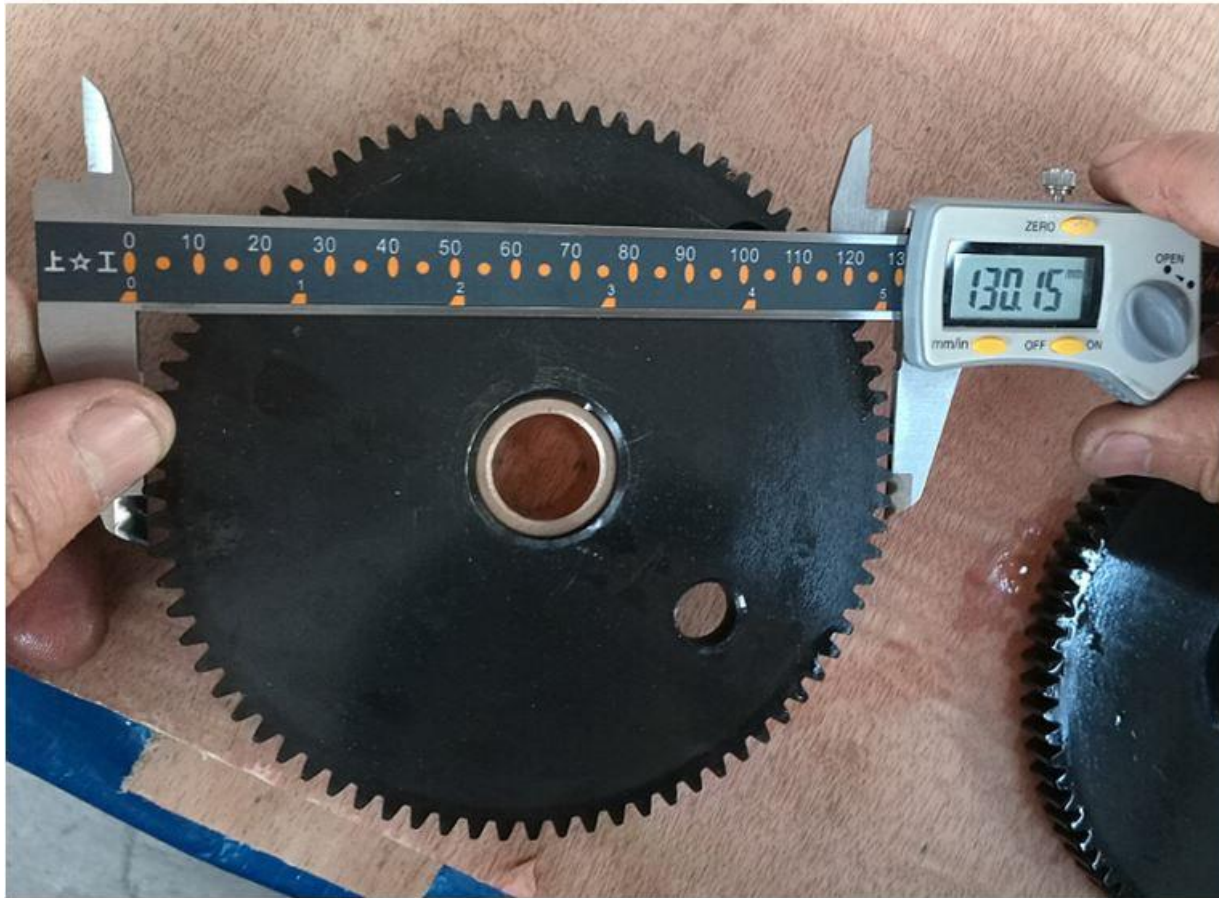


Urethane Foam Parts

Quality Control Processes


We manage QC on site and provide inspection reports before each shipment is released

Slide – image of an inspection report

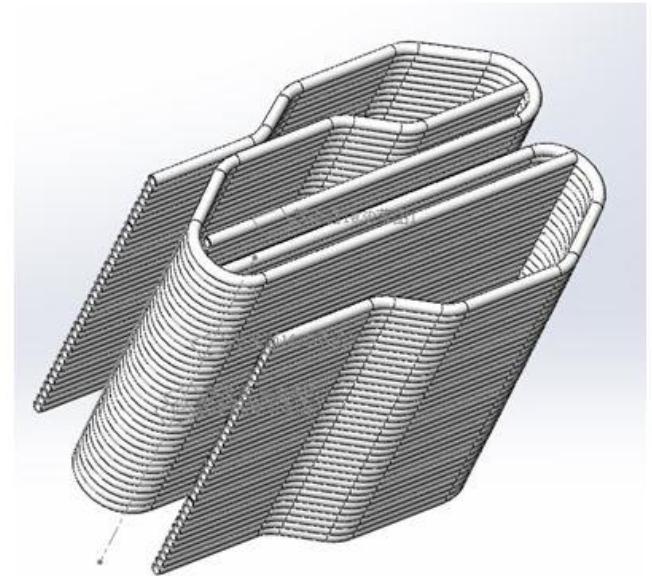
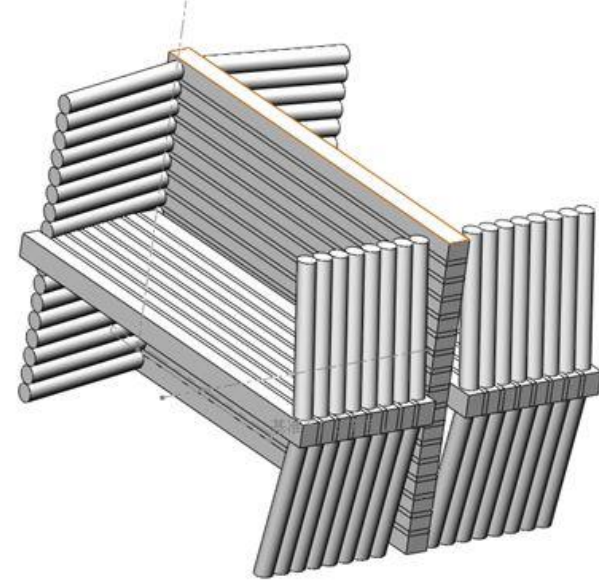


A GENERAL

Report No. : 13140121

Vendor/Supplier:	NA Pacific Inc		
Prepared by:	Ms Ye	Inspection Date:	2017.01.11
Inspection Location :	China	Inspection Type :	FRI
Item/Style No.:	P100319/10.375 P100321/11.875 P100325/14.875	P/O number:	lyla2016181/13140121
Product Description:	Push-pull tube assembly	Approval Sample Available:	Nil
			
Full Packing View		Full Carton View	

We are QC minded and packaging focused



Inventory Management

We have the financial capability to manage large projects ensuring our client is protected

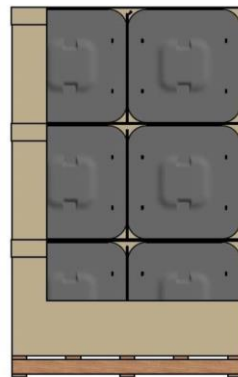
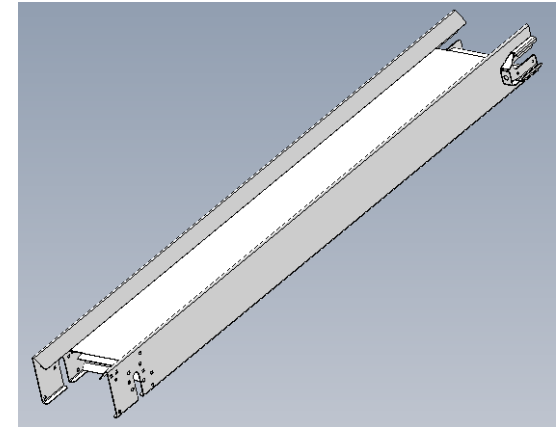


We hold inventory in 6 States : California, Wisconsin, Indiana, Illinois, Georgia & New York



Our model is to add value to the supply chain

- Sub-Assemblies
- Parts Kits
- Consignment Inventory Solution
Or Extended Terms on invoicing
- On site QC management /
- Factory audits on request
- Unique Packaging Solutions



NA Pacific is project driven focused on providing sub-assembly solutions to OEM's.

We are a Proud Development Company



Since we have the capability to build the entire sub-assembly for a client, then by default we also have all the parts, so we also sell individual parts ...



We look forward to serving you.



PROVIDING ENGINEERED SUB-ASSEMBLIES AND PARTS TO OEMs

CORPORATE OFFICE

Drummondville, QC
Canada J2C 2G5

T. 514 587-6740
info@napacific.com