



48 Frame, Single Phase Motor

- Drip-proof
- Totally Enclosed

56 Frame, Four-In-One Motor

- Single-Phase
- Three-Phase

General Purpose, Single Phase Motor

- Resistance Start
- Drip-proof Capacitor Start
- Drip-proof Capacitor Run
- Totally Enclosed Capacitor Start
- Totally Enclosed Capacitor Run
- Drip-proof Capacitor Start & Run Motor
- Totally Enclosed Capacitor Start & Run Motor

Pump Motor

- 56 Frame Drip-proof Single-Phase Jet Pump Motor
- 56 Frame Drip-proof Three-Phase Jet Pump Motor
- 56 Frame Totally Enclosed Three-Phase Jet Pump Motor
- Drip-proof Three-Phase Close-Coupled Pump (JM) Motor
- Drip-proof Three-Phase Close-Coupled Pump (JP) Motor
- Totally Enclosed Three-Phase Close-Coupled Pump (JM) Motor
- Totally Enclosed Three-Phase Close-Coupled Pump (JP) Motor
- Hydraulic Pump Motor
- Single-Phase Pool and Spa Pump Motor

Farm Duty Motor

- Drip-proof Single Phase Air-Compressor Motor
- Totally Enclosed Single Phase Air-Compressor Motor
- Farm Duty Motor

TEAO Fan Motor

Brake Motor

- Single-Phase
- Three-Phase

High-Efficiency Motor

- Drip-proof
- Totally Enclosed

Premium Efficiency Motor

- Drip-proof
- Totally Enclosed
- Totally Enclosed (Cast Iron)

ENV Motor

silient Base Motor

pecial Motor

Commercial Disposer

Table Of Contents

48 Frame, Single Phase Motor

- Drip-proof..... 11
- Totally Enclosed..... 12

56 Frame, Four-In-One Motor

- Single-Phase 13
- Three-Phase 14

General Purpose, Single Phase Motor

- Resistance Start 15
- Drip-proof Capacitor Start..... 16
- Drip-proof Capacitor Run..... 17
- Totally Enclosed Capacitor Start..... 18
- Totally Enclosed Capacitor Run..... 19
- Drip-proof Capacitor Start & Run Motor..... 20
- Totally Enclosed Capacitor Start & Run Motor..... 21
- Single Phase Fractional Horsepower Premium Efficiency Motor (Two capacitors)..... 22
- Three Phase Fractional Horsepower Premium Efficiency Motor..... 23

Pump Motor

- 56 Frame Drip-proof Single-Phase Jet Pump Motor..... 24
- 56 Frame Drip-proof Three-Phase Jet Pump Motor..... 25
- 56 Frame Totally Enclosed Three-Phase Jet Pump Motor..... 26
- Drip-proof Three-Phase Close-Coupled Pump (JM) Motor..... 27
- Drip-proof Three-Phase Close-Coupled Pump (JP) Motor..... 28
- Totally Enclosed Three-Phase Close-Coupled Pump (JM) Motor..... 29
- Totally Enclosed Three-Phase Close-Coupled Pump (JP) Motor..... 30
- Hydraulic Pump Motor..... 31
- Single-Phase Pool and Spa Pump Motor..... 32

Farm Duty Motor

- Drip-proof Single Phase Air-Compressor Motor..... 33
- Totally Enclosed Single Phase Air-Compressor Motor..... 34
- Farm Duty Motor..... 35
- TEAO Fan Motor..... 36

Brake Motor

- Single-Phase..... 37
- Three-Phase..... 38

High-Efficiency Motor

- Drip-proof..... 39
- Totally Enclosed..... 41

Premium Efficiency Motor

- Drip-proof 43
- Totally Enclosed 45
- Totally Enclosed (Cast Iron) 47

NEMA EC Motor..... 49

TENV Motor 50

Resilient Base Motor 51

Special Motor 52

Commercial Disposer 53

Motor Accessories Kits..... 54

Motor Colour..... 56





Assembling Line



Winding Line



Package Line



Machining Workshop



Type Test



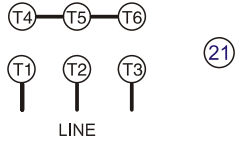

VPI-Vacuum Paint Equipment



Rotor Balance



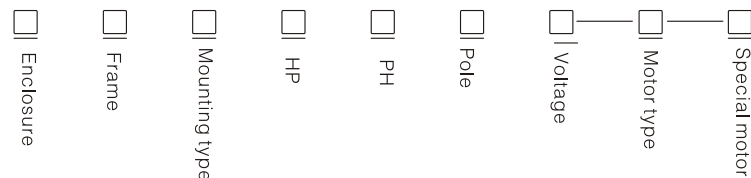
Package Line

MODEL	F143T1M2A	01	FRAME	143T	16	LBS	34	17
ENCL	TEFC	02	IP	44	03	VOLTS	230/460	18
HP	1	04	SF	1.15	05	AMPS	3.2/1.6	19
PH	3	06	HZ	60	07	EFF	80 %	20
NEMA	B	08	CODE	M	09	CONNECTION 		
INS	F	10	RPM	3550	11			
AMB	40	12	DUTY CONT		13			
DE/ODE BRG	6205/6203	14						
SER	C53ZA00001	15	ACCEPTABLE FOR FIELD WIRING 					

- 01、 Model-The ID number
- 02、 IP Form-Inherent Protection Form
- 03、 IP Class-Inherent Protection Class
- 04、 HP-Rated horsepower the motor will produce
- 05、 S.F.-Percentage of the rated horsepower the motor can safely operate at: Example: 1.15 SF (115% of rated HP)
- 06、 PH-Electrical phase usually 1 or 3
- 07、 HZ-Input frequency of the power supply, usually 50 or 60 HZ.
- 08、 NEMA Design Code
- 09、 CODE-NEMA locked-rotor KVA
- 10、 INS CL-Insulation Class
- 11、 RPM-Full load speed at rated frequency
- 12、 MAX AMB-The allowable surrounding air temperature
- 13、 DUTY-Time rating under load
- 14、 (OPP.)SHAFT END BEARING-Manufacturer (opposite) drive end bearing number
- 15、 SER-Serial number
- 16、 NEMA FRAME
- 17、 WT/LBS-Motor weight in pounds
- 18、 VOLTS-Voltage rating of the motor at the operating frequency
- 19、 F.L. AMPS-The rated load current expressed in amps at nameplated horsepower with nameplate voltage and frequency
- 20、 NOM EFF-Average Efficiency
- 21、 Wiring Diagram
- 22、 CSA Mark-Certified by the Canadian Standards Association
- 23、 CSA Verification Mark-Complies with CSA's Energy Efficiency Verification Service and their Standard C390-C390 is the Canadian efficiency equivalent of EPAAct.

HOW TO READ A MODEL NUMBER:

This is a breakdown of the model on the nameplate:



2.1 D-ODP: F-TEFC: A-TEAO; N-TENV;
Enclosure: D-ODP: Dripproof; F-TEFC:Totally enclosed, fan cooled;A-TEAO:Totally enclosed Air-over; N-TENV: Totally enclosed.

2.2 Frame: 48、 56、 140、 180、 210、 250 ……

2.2.1 42、 48、 56、 16、
Small-size motor: two numbers, or example: 42、 48、 56. Frame number of small-size motor: central height of frame D (inch) * 16.
1: D=3, 3x16=48, 48 ; Sample 1: Central height D=3 inch, 3*16=48, frame number 48;
2: D=3.5, 3.5x16=56,56 ; Sample 2: Central height D=3.5 inch, 3.5*16=56, frame number 56;

2.2.2 140、 180、 210、 250… 4、 (115) NEMA MG1-1998 4.2.1
Medium-size Motor: three or four numbers, for example: 140、 180、 210、 250 …… Frame number of medium-size motor: first two numbers=central height of frame D (inch) * 4. The third and fourth number (115) = Axial distance (2F) of frame base hole. (Refer to: NEMA MG1-1998 Motor and El ti IG t 4 2 1)
ec r ca enera or . . .
1: D=3.5 3.5x4=14, 140; Sample 1: Central height D=3.5 inch, 3.5x4=14, frame number 140;
2: D=4.5 4.5x4=18, 180。 Sample 2: Central height D=4.5 inch, 4.5x4=18, frame number 180;

2.3 Mounting type: No letter if standard mounting and resilient mounting; C-Drive End C type flange mounting; D- Drive End D type flange mounting; H-H foot mounting; CH- Drive End C type flange mount and H footing mounting(Letter CH: inseparable); J- Jet Pump Motor; JM, JP- ball bearing, C type flange mounting, Pump motor(Letter JM, JP: inseparable); N: no foot; T- standard mounting; Y- special mounting size; Z- Other parts except Shaft Extension are standard mounting…….

2.4 (HP) ; (HP) HP: Horsepower.

2.5 S'(Single) ≡ "M"(Multi) PH: Single-phase"S'(Single),three-phase"M"(Multi).

2.6 Pole: 2、 4、 6、 8、 10. "2":2 pole motor, "4":4pole motor ……。

2.7 Voltage;

Code	A	B	C	D	E	G
Voltage	230V、 208-230/460V	220/440V	115V、 115/208-230V	575V	200V	190/380V

2.8 Motor type: L-Start and running capacitors, C-Start capacitor, Y-Run capacitor, U-No capacitor. (Only for Single-Phase motor).

2.9 Special motor: 1- ; 2- Electromagnetic braking motor; 3-Frequency control motor……

3、 Premium Efficiency Motor: add "S"to the front of the model No.

4、 Illustration of the Name.

- 1: F56CN1.5M2A 208-230/460V
- Sample 1: F56CN1.5M2A TEFC, 56 Frame C type flange mounting, No base, 1.5HP, Three-phase, 2 Pole, 208-230/460V (230V) Asynchronous motor.
- 2: D182T3M4D 182T 3HP 575V
- Sample 2: D182T3M4D ODP, 182T Frame, Base mounting, 3HP, Three-phase, 4 Pole, 575V ,Asynchronous motor.
- 3: D561S4C-Y 56 1HP 115/208-230V (115V)
- Sample 3: D561S4C-Y ODP, 56 Frame, Base mounting, 1HP, Single-phase, 4 Pole, 115/208-230V (或115V) , Capacitor running, Asynchronous motor.
- 4: A182T3S4A TEAO 182T 3HP 208-230/460V (230V)
- Sample 4: A182T3S4A TEAO, 182T Frame, Base mounting, 3HP, Single-phase, 4 Pole, 208-230/460V(230V), Start and running capacitors, Asynchronous motor.
- 5: F56C1S4C -2 TEFC 56 C 1HP、 115/208-230V (115V)
- Sample 5: F56C1S4C -2 TEFC, 56 Frame, C type flange mounting, Base mounting, 1 HP, Single-phase, 4 Pole, 115/208-230V (115V) , Start and running capacitors, Asynchronous motor.
- 6: SD182T3M2A 182T 3HP 208-230/46 (230V)
- Sample 6: SD182T3M2A Premium Efficiency, ODP, 182T Frame, Base mounting, 3 HP, Three-phase, 2 Pole, 208-230/46(230V), Asynchronous motor.

48 Frame Dripproof Single-Phase Motor

Features:

- HP: 1/10HP-1HP
- Pole: 4P, 6P, 8P
- Frame: 48
- Rolled steel
- NEMA design: N
- Service factor: 1.0
- Insulation Class: F (UL approved)
- Enclosure: ODP
- IP Class: IP23
- CSA&CUS certified
- Accept Auto Thermal Protector



HP	RPM	NEMA FRAME	Model	Volts	HZ	ENCL.	S.F	Full Load AMPS	WGT. LBS.
1/10	1800	48	D48 1/10S4C	115/230	60	ODP	1.0	1.25/0.63	11
1/8	1800	48	D48 1/8S4C	115/230	60	ODP	1.0	1.64/0.84	11
	1200	48	D48 1/8S6C	115/230	60	ODP	1.0	1.6/0.8	12
	900	48	D48 1/8S8C-1	115/230	60	ODP	1.0	2.1/1.05	13
1/6	1800	48	D48 1/6S4C	115/230	60	ODP	1.0	2.17/1.09	11
	1200	48	D48 1/6S6C	115/230	60	ODP	1.0	2.12/1.06	12
	900	48	D48 1/6S8C	115/230	60	ODP	1.0	2.75/1.38	13
1/5	1800	48	D48 1/5S4C	115/230	60	ODP	1.0	2.2/1.1	11
	1200	48	D48 1/5S6C-1	115/230	60	ODP	1.0	2.6/1.4	12
	900	48	D48 1/5S8C-1	115/230	60	ODP	1.0	2.81/1.41	15
1/4	1800	48	D48 1/4S4C	115/230	60	ODP	1.0	2.7/1.4	11
	1200	48	D48 1/4S6C-1	115/230	60	ODP	1.0	3/1.6	13
	900	48	D48 1/4S8C	115/230	60	ODP	1.0	3.62/1.81	15
1/3	1200	48	D48 1/3S6C	115/230	60	ODP	1.0	3.6/1.8	12
	900	48	D48 1/3S8C	115/230	60	ODP	1.0	4.17/2.09	17
1/2	1800	48	D48 1/2S4C-1	115/230	60	ODP	1.0	4.7/2.45	19
	1200	48	D48 1/2S6C	115/230	60	ODP	1.0	5.1/2.55	20
	900	48	D48 1/2S8C	115/230	60	ODP	1.0	5.75/2.88	31
3/4	1800	48	D48 3/4S4C	115/230	60	ODP	1.0	6.73/3.54	20
	1200	48	D48 3/4S6C	115/230	60	ODP	1.0	7.78/3.89	22
1	1800	48	D48 1S4C	115/230	60	ODP	1.0	9.5/4.95	21
	1200	48	D48 1S6C	115/230	60	ODP	1.0	11/5.5	26

48 Frame Totally Enclosed Single-Phase Motor

Features:

- HP: 1/3HP-1HP
- Pole: 2P, 4P
- Frame: 48
- Rolled steel
- Capacitor Start
- NEMA design: N
- Service factor: 1.0
- Insulation Class: F (UL approved)
- Enclosure: TEFC
- IP Class: IP44, IP55
- Accept Auto Thermal Protector
- CSA&CUS certified



HP	RPM	NEMA FRAME	Model	Volts	HZ	ENCL.	S.F	Full Load AMPS	WGT. LBS.
1/3	3600	48	F481/3S2C	115/230	60	TEFC	1.0	3.53/1.8	15
	1800	48	F481/3S4C-1	115/230	60	TEFC	1.0	3.39/1.7	16
1/2	3600	48	F481/2S2C	115/230	60	TEFC	1.0	5.11/2.56	18
	1800	48	F481/2S4C-1	115/230	60	TEFC	1.0	6.92/3.46	21
3/4	3600	48	F483/4S2C	115/230	60	TEFC	1.0	2.93/1.47	20
	1800	48	F483/4S4C	115/230	60	TEFC	1.0	7.37/3.69	22
1	3600	48	F481S2C	115/230	60	TEFC	1.0	9.4/4.7	21
	1800	48	F481S4C	115/230	60	TEFC	1.0	8.91/4.46	25

56 Frame Four-in-one Motor, Single-Phase

Features:

- HP: 1/3HP-3HP
- Pole: 2P, 4P
- NEMA design: L
- Rolled steel frame, Detachable foot, C flange
- Capacitor Start and Capacitor Run
- Service factor: 1.15
- Insulation Class: F(UL approved)
- Enclosure: TEFC
- IP Class: IP44
- CSA&CUS certified
- Accept Manual or Auto Thermal Protector.



HP	RPM 60HZ	NEMA FRAME	Model	Volts	HZ	ENCL.	S.F	Full Load AMPS	% EFF.	WGT. LBS.
1/3	3600	56	F56C 1/3S2C	115/230	60	TEFC	1.15	4.55/2.36	67	23
	1800	56	F56C1/3S4C	115/230	60	TEFC	1.15	4.99/2.58	65	24
1/2	3600	56	F56C1/2S2C	115/230	60	TEFC	1.15	6.01/3.108	68	24
	1800	56	F56C1/2S4C	115/230	60	TEFC	1.15	6.68/3.45	68	25
3/4	3600	56	F56C3/4S2C	115/230	60	TEFC	1.15	8.47/4.29	74	26
	1800	56	F56C3/4S4C	115/230	60	TEFC	1.15	8.27/4.22	74	29
1	3600	56	F56C1S2C	115/230	60	TEFC	1.15	9.44/4.9	77	30
	1800	56	F56C1S4C	115/230	60	TEFC	1.15	9.7/5.04	75	38
1.5	3600	56	F56HC1.5S2C	115/230	60	TEFC	1.15	13.14/6.77	77	37
	1800	56	F56HC1.5S4C	115/230	60	TEFC	1.15	3.63/6.66	77	42
2	3600	56	F56HC2S2C	115/230	60	TEFC	1.15	15.3/7.8	81	44
	1800	56	F56HC2S4C	115/230	60	TEFC	1.15	16.51/8.27	80	47
3	3600	56	F56HC3S2C	115/230	60	TEFC	1.15	24.0/12.3	83	60

56 Frame Four-in-one Motor, Three-Phase

Features:

- HP: 1/3HP-3HP
- Pole: 2P, 4P
- NEMA design: B
- Rolled steel frame, Detachable foot, C flange
- Service factor: 1.15
- Insulation Class: F(UL approved)
- Enclosure: TEFC
- IP Class: IP44
- CSA&CUS certified



HP	RPM 60HZ	NEMA FRAME	Model	Volts	HZ	ENCL.	S.F	Full Load AMPS	WGT. LBS.
1/3	3600	56	F56C 1/3M2A	208-230/460	60	TEFC	1.15	2.3-1.3/0.65	20
	3600	56	F56C 1/3M2D	575	60	TEFC	1.15	0.5	20
	1800	56	F56C 1/3M4A	208-230/460	60	TEFC	1.15	1.71-1.9/0.95	22
	1800	56	F56C 1/3M4D	575	60	TEFC	1.15	0.6	22
	1200	56	F56C 1/3M6A	208-230/460	60	TEFC	1.15	1.64/0.82	22
	1200	56	F56C 1/3M6D	575	60	TEFC	1.15	0.82	23
1/2	3600	56	F56C 1/2M2A	208-230/460	60	TEFC	1.15	2.8-2.0/1.35	23
	3600	56	F56C 1/2M2D	575	60	TEFC	1.15	0.86	23
	1800	56	F56C 1/2M4A	208-230/460	60	TEFC	1.15	3.3-2/1	24.5
	1800	56	F56C 1/2M4D	575	60	TEFC	1.15	1.01	24.5
	1200	56	F56C 1/2M6A	208-230/460	60	TEFC	1.15	2.2/1.1	26
	1200	56	F56C 1/2M6D	575	60	TEFC	1.15	0.93	26.5
3/4	3600	56	F56C 3/4M2A	208-230/460	60	TEFC	1.15	3.3-2.4/1.2	23
	3600	56	F56C 3/4M2D	575	60	TEFC	1.15	0.9	23
	1800	56	F56C3/4M4A	208-230/460	60	TEFC	1.15	4.2-2.8/1.4	28
	1800	56	F56C3/4M4D	575	60	TEFC	1.15	1	28
	1200	56	F56C 3/4M6A	208-230/460	60	TEFC	1.15	2.84/1.42	30
	1200	56	F56C 3/4M6D	575	60	TEFC	1.15	1.31	30
1	3600	56	F56C1M2A	208-230/460	60	TEFC	1.15	3.7-3.2/1.6	24
	3600	56	F56C1M2D	575	60	TEFC	1.15	1.32	24
	1800	56	F56C 1M4A	208-230/460	60	TEFC	1.15	5.4-3.4/1.7	33
	1800	56	F56C 1M4D	575	60	TEFC	1.15	1.6	33
	1200	56	F56C 1M6A	208-230/460	60	TEFC	1.15	2.27/2.41	34
	1200	56	F56C 1M6D	575	60	TEFC	1.15	1.75	34
1.5	3600	56	F56HC1.5M2A	208-230/460	60	TEFC	1.15	5.3-4.2/2.1	29
	3600	56	F56HC1.5M2D	575	60	TEFC	1.15	1.78	29
	1800	56	F56HC1.5M4A	208-230/460	60	TEFC	1.15	6.4-5/2.5	37
	1800	56	F56HC1.5M4D	575	60	TEFC	1.15	2.1	37
2	3600	56	F56HC2M2A	208-230/460	60	TEFC	1.15	6.6-5.2/2.6	34
	3600	56	F56HC2M2D	575	60	TEFC	1.15	2.1	34
	1800	56	F56HC2M4A	208-230/460	60	TEFC	1.15	8.4-6/3	40
	1800	56	F56HC2M4D	575	60	TEFC	1.15	2.5	40
3	3600	56	F56HC3M2A	208-230/460	60	TEFC	1.15	8.5-8/4	39
	3600	56	F56HC3M2D	575	60	TEFC	1.15	3.2	39
	1800	56	F56HC3M4A	208-230/460V	60	TEFC	1.0	4.5	47
	1800	56	F56HC3M4D	575	60	TEFC	1.0	4.3	47

Resistance Start Motor

Features:

- HP: 1/4HP-3/4HP
- Pole: 4P
- Frame: 48, 56
- Rolled steel
- Resistance Start
- NEMA design: N
- NEMA service factor: 1.0, 1.15, 1.35
- Insulation Class: F(UL approved)
- Enclosure: ODP
- IP Class: IP23



HP	RPM	NEMA FRAME	Model	Volts	HZ	ENCL.	S.F	Full Load AMPS	WGT. LBS.
1/4	1800	48	D481/4S4C-U	115	60	ODP	1.0	4.16	12
	1800	48	D481/4S4C-U-1	115	60	ODP	1.35	4.16	12
	1800	56C	D56C1/4S4A-U	208-230	50	ODP	1.15	2.08-2.16	22
1/3	1800	48	D481/3S4C-U	115	60	ODP	1.0	5.11	13
1/2	1800	48	D481/2S4C-U	115	60	ODP	1.0	6.96	14
3/4	1800	48	D483/4S4C-U	115	60	ODP	1.0	9.38	16

Dripproof Single-Phase Capacitor Start Motor

Features:

- HP: 1/3HP-2HP
- Pole: 2P, 4P
- Capacitor Start
- Frame: 56, 140T
- Rolled steel
- NEMA design: N
- Service factor: 1.15
- Insulation Class: F(UL approved)
- Enclosure: ODP
- IP Class: IP23
- CSA&CUS certified



HP	RPM	NEMA FRAME	Model	Volts	HZ	ENCL.	S.F	Full Load AMPS	WGT. LBS.
1/3	3600	56	D561/3S2C-C	115/230	60	ODP	1.15	7.0/3.5	23
	1800	56	D56 1/3S4C-C	115/230	60	ODP	1.15	7.4/3.7	24
1/2	3600	56	D561/2S2C-C	115/230	60	ODP	1.15	8.6/4.3	24
	1800	56	D56 1/2S4C-C	115/230	60	ODP	1.15	7.9/4.0	25
3/4	3600	56	D56 3/4S2C-C	115/230	60	ODP	1.15	11.4/5.7	27
	1800	56	D563/4S4C-C	115/230	60	ODP	1.15	10.2/5.1	30
1	3600	56	D561S2C-C	115/230	60	ODP	1.15	13.2/6.6	29
	3600	143T	D143T1S2C-C	115/230	60	ODP	1.15	11.8/5.9	30
	3600	143T	D143T1S2A-C	230/460	60	ODP	1.15	6.3/2.4	29
	1800	56	D56 1S4C-C	115/230	60	ODP	1.15	13/6.6	42
	1800	143T	D143T1S4C-C	115/230	60	ODP	1.15	13/6.7	43
	1800	143T	D143T1S4A-C	230/460	60	ODP	1.15	7.1/3.3	42
1.5	3600	56	D56 1.5S2C-C	115/230	60	ODP	1.15	17.6/8.8	32
	3600	145T	D145T1.5S2C-C	115/230	60	ODP	1.15	15.3/7.7	23
	3600	145T	D145T1.5S2A-C	230/460	60	ODP	1.15	8.1/3.3	32
	1800	56	D56 1.5S4C-C	115/230	60	ODP	1.15	17.8/8.8	47
	1800	145T	D145T1.5S4C-C	115/230	60	ODP	1.15	16.2/8.2	48
	1800	145T	D145T1.5S4A-C	230/460	60	ODP	1.15	9.1/4.2	47
2	3600	56	D56 2S2C-C	115/230	60	ODP	1.15	23/11.5	46
	3600	145T	D145T2S2C-C	115/230	60	ODP	1.15	18.6/9.9	47
	3600	145T	D145T2S2A-C	230/460	60	ODP	1.15	10.5/4.1	46
	1800	56	D56 2S4C-C	115/230	60	ODP	1.15	23.4/11.7	49
	1800	145T	D145T2S4C-C	115/230	60	ODP	1.15	16.8/8.3	50
	1800	145T	D145T2S4A-C	230/460	60	ODP	1.15	11.4/5.5	49

Dripproof Single-Phase Capacitor Run Motor

Features:

- HP: 1/3HP-3HP
- Pole: 2P, 4P
- Capacitor Run
- Frame: 56,140T
- Rolled steel, C-Face Kit
- NEMA design: N
- Service factor: 1.15
- Insulation Class: F(UL approved)
- Enclosure: ODP
- IP Class: IP23
- CSA&CUS certified
- Accept Auto Thermal Protector



HP	RPM	NEMA FRAME	Model	Volts	HZ	ENCL.	S.F	Full Load AMPS	WGT. LBS.
1/3	3600	56	D56 1/3S2C-Y	115/208-230	60	ODP	1.15	4.7/2.2-2.5	17
	1800	56	D56 1/3S4C-Y	115/208-230	60	ODP	1.15	4.3/2.1-2.3	17
1/2	3600	56	D56 1/2S2C-Y	115/208-230	60	ODP	1.15	5.9/2.9-3.1	18
	1800	56	D56 1/2S4C-Y	115/208-230	60	ODP	1.15	5.8/2.8-3.0	20
3/4	3600	56	D56 3/4S2C-Y	115/208-230	60	ODP	1.15	8.1/4.2-4.1	22
	1800	56	D56 3/4S4C-Y	115/208-230	60	ODP	1.15	8.1/4.0-4.2	25
1	3600	56	D56 1S2C-Y	115/208-230	60	ODP	1.15	12/6.4-5.8	24
	3600	143T	D143T1S2C-Y	115/208-230	60	ODP	1.15	11.5/6.4-5.8	25
	3600	143T	D143T1S2A-Y	208-230/460	60	ODP	1.15	5.8-5.4/2.6	24
	1800	56	D56 1S4C-Y	115/208-230	60	ODP	1.15	11.5/6.0-5.7	36
	1800	143T	D143T1S4C-Y	115/208-230	60	ODP	1.15	11.5/6.0-5.7	37
	1800	143T	D143T1S4A-Y	208-230/460	60	ODP	1.15	4.8-5.3/2.7	36
1.5	3600	56	D56 1.5S2C-Y	115/208-230	60	ODP	1.15	14.5/7.8-7.2	34
	3600	145T	D145T1.5S2C-Y	115/208-230	60	ODP	1.15	14.5/8.0-7.6	32
	3600	145T	D145T1.5S2A-Y	208-230/460	60	ODP	1.15	7.5-7.0/3.4	31
	1800	56	D56 1.5S4C-Y	115/208-230	60	ODP	1.15	15.5/8.1-7.6	42
	1800	145T	D145T1.5S4C-Y	115/208-230	60	ODP	1.15	15.5/8.1-7.6	43
	1800	145T	D145T1.5S4A-Y	208-230/460	60	ODP	1.15	7.1-6.7/3.4	42
2	3600	56	D56 2S2C-Y	115/208-230	60	ODP	1.15	18/10.1-9.2	41
	3600	145T	D145T2S2C-Y	115/208-230	60	ODP	1.15	18/10.2-9.4	42
	3600	145T	D145T2S2A-Y	208-230/460	60	ODP	1.15	9.8-9.1/4.5	41
	1800	56	D56 2S4C-Y	115/208-230	60	ODP	1.15	19.0/10-9.3	42
	1800	145T	D145T2S4C-Y	115/208-230	60	ODP	1.15	19.0/10-9.3	43
	1800	145T	D145T2S4A-Y	208-230/460	60	ODP	1.15	9.8-9.1/4.5	42
3	3600	56	D56 3S2C-Y	115/208-230	60	ODP	1.15	25/14.2-13	49
	3600	145T	D145T 3S2C-Y	115/208-230	60	ODP	1.15	25/14.2-13	50
	3600	145T	D145T3S2A-Y	208-230/460	60	ODP	1.15	14-12.5/6.5	49

Totally Enclosed Single-Phase Capacitor Start Motor

Features:

- HP: 1/3HP-2HP
- Pole: 2P, 4P
- Capacitor Start
- Frame: 56, 140T
- Rolled steel
- NEMA design: N
- Service factor: 1.15
- Insulation Class: F(UL approved)
- Enclosure: TEFC
- IP Class: IP44
- CSA&CUS certified
- Accept Manual or Auto Thermal Protector.



HP	RPM	NEMA FRAME	Model	Volts	HZ	ENCL.	S.F	Full Load AMPS	WGT. LBS.
1/3	3600	56	F561/3S2C-C	115/208-230	60	TEFC	1.15	6.0/2.8-3.0	26
	1800	56	F56 1/3S4C-C	115/208-230	60	TEFC	1.15	5.7/2.7-2.8	27
1/2	3600	56	F561/2S2C-C	115/208-230	60	TEFC	1.15	7.7/3.8-3.9	26
	1800	56	F56 1/2S4C-C	115/208-230	60	TEFC	1.15	7.9/3.8-4.0	28
3/4	3600	56	F56 3/4S2C-C	115/208-230	60	TEFC	1.15	9.8/4.9-4.8	30
	1800	56	F563/4S4C-C	115/208-230	60	TEFC	1.15	10.3/5.3-5.2	32
1	3600	56	F561S2C-C	115/208-230	60	TEFC	1.15	11.8/6.1-5.9	31
	3600	143T	F143T1S2C-C	115/208-230	60	TEFC	1.15	11.8/6.1-5.9	32
	3600	143T	F143T1S2A-C	208-230/460	60	TEFC	1.15	6.2-5.6/2.8	31
	1800	56	F56 1S4C-C	115/208-230	60	TEFC	1.15	13/6.6-6	44
	1800	143T	F143T1S4C-C	115/208-230	60	TEFC	1.15	13/6.6-6.5	45
	1800	143T	F143T1S4A-C	208-230/460	60	TEFC	1.15	6.7-6.0/3.1	44
1.5	3600	56	F56 1.5S2C-C	115/208-230	60	TEFC	1.15	15.3/8.4-7.7	33
	3600	145T	F145T1.5S2C-C	115/208-230	60	TEFC	1.15	15.3/8.4-7.7	34
	3600	145T	F145T1.5S2A-C	208-230/460	60	TEFC	1.15	8.0-7.2/3.6	33
	1800	56	F56 1.5S4C-C	115/208-230	60	TEFC	1.15	17.8/9.3-8.9	49
	1800	145T	F145T1.5S4C-C	115/208-230	60	TEFC	1.15	15.3/8.4-7.7	50
	1800	145T	F145T1.5S4A-C	208-230/460	60	TEFC	1.15	8.7-7.9/4.0	49
2	3600	56	F56 2S2C-C	115/208-230	60	TEFC	1.15	18.6/11-9.9	48
	3600	145T	F145T2S2C-C	115/208-230	60	TEFC	1.15	18.6/11-9.9	49
	3600	145T	F145T2S2A-C	208-230/460	60	TEFC	1.15	10.5-9.3/4.6	48
	1800	56	F56 2S4C-C	115/208-230	60	TEFC	1.15	21.7/11.5-10.8	51
	1800	145T	F145T2S4C-C	115/208-230	60	TEFC	1.15	21/11.3-10.8	52
	1800	145T	F145T2S4A-C	208-230/460	60	TEFC	1.15	11.4-10.3/5.2	51

Totally Enclosed Single-Phase Capacitor Run Motor

Features:

- HP: 1/3HP-3HP
- Pole: 2P, 4P
- Capacitor Run
- Frame: 56, 140T
- Rolled steel, C-face Kit
- NEMA design: N
- Service factor: 1.15
- Insulation Clas: F(UL approved)
- Enclosure: TEFC
- IP Class: IP44
- CSA&CUS certified;
- Accept Auto Thermal Protector



HP	RPM	NEMA FRAME	Model	Volts	HZ	ENCL.	S.F	Full Load AMPS	WGT. LBS.
1/3	3600	56	F56 1/3S2C-Y	115/208-230	60	TEFC	1.15	4.7/2.3-2.5	19
	1800	56	F56 1/3S4C-Y	115/208-230	60	TEFC	1.15	4.3/2.1-2.3	19
1/2	3600	56	F56 1/2S2C-Y	115/208-230	60	TEFC	1.15	5.9/2.9-3.1	20
	1800	56	F56 1/2S4C-Y	115/208-230	60	TEFC	1.15	5.8/2.8-3.0	22
3/4	3600	56	F56 3/4S2C-Y	115/208-230	60	TEFC	1.15	8.1/4.2-4.1	24
	1800	56	F56 3/4S4C-Y	115/208-230	60	TEFC	1.15	8.1/4.0-4.2	27
1	3600	56	F56 1S2C-Y	115/208-230	60	TEFC	1.15	8.3/4.8-4.4	26
	3600	143T	F143T1S2C-Y	115/208-230	60	TEFC	1.15	8.3/4.8-4.4	27
	3600	143T	F143T1S2A-Y	208-230/460	60	TEFC	1.15	4.9-4.6/2.4	26
	1800	56	F56 1S4C-Y	115/208-230	60	TEFC	1.15	9.2/5.0-4.7	38
	1800	143T	F143T1S4C-Y	115/208-230	60	TEFC	1.15	9.2/5.0-4.7	39
	1800	143T	F143T1S4A-Y	208-230/460	60	TEFC	1.15	4.9-4.7/2.5	38
1.5	3600	56	F56 1.5S2C-Y	115/208-230	60	TEFC	1.15	13.1/7.0-6.6	33
	3600	145T	F145T1.5S2C-Y	115/208-230	60	TEFC	1.15	13.1/7.0-6.6	34
	3600	145T	F145T1.5S2A-Y	208-230/460	60	TEFC	1.15	7.1-6.3/3.3	33
	1800	56	F56 1.5S4C-Y	115/208-230	60	TEFC	1.15	13.1/7.0-6.6	42
	1800	145T	F145T1.5S4C-Y	115/208-230	60	TEFC	1.15	13.3/7.1-6.6	43
	1800	145T	F145T1.5S4A-Y	208-230/460	60	TEFC	1.15	6.4-5.9/3.0	42
2	3600	56	F56 2S2C-Y	115/208-230	60	TEFC	1.15	16.5/9.1-8.3	43
	3600	145T	F145T2S2C-Y	115/208-230	60	TEFC	1.15	16.5/9.1-8.3	44
	3600	145T	F145T2S2A-Y	208-230/460	60	TEFC	1.15	9.2/8.1-4.1	43
	1800	56	F56 2S4C-Y	115/208-230	60	TEFC	1.15	16.5/9.0-8.3	44
	1800	145T	F145T2S4C-Y	115/208-230	60	TEFC	1.15	16.5/9.0-8.3	43
	1800	145T	F145T2S4A-Y	208-230/460	60	TEFC	1.15	9.4-8.6/4.5	44
3	3600	56	F56 3S2C-Y	115/208-230	60	TEFC	1.15	24.0/13.2-12.3	51
	3600	145T	F145T3S2C-Y	115/208-230	60	TEFC	1.15	24.0/13-12.3	52
	3600	145T	F145T3S2A-Y	208-230/460	60	TEFC	1.15	14-12.5/6.5	51

Single-Phase, Dripproof, General Purpose, Capacitor Start & Run Motor

Features:

- HP: 1/3-10HP
- Pole: 2P, 4P
- Frame: 56-215T
- Enclosure: ODP
- IP Class: IP23
- Service Factor: 1.15
- Capacitor Start and Capacitor Run
- Accept C-face Kit
- Accept Manual or Auto Thermal Protector
- CSA&CUS certified



HP	RPM 60HZ	NEMA FRAME	Model	Volts	HZ	ENCL.	S.F	Full Load AMPS	WGT. LBS.
1/3	3600	56	D56 1/3S2C	115/208-230	60	ODP	1.15	4.4/2.25-2.35	23
	1800	56	D56 1/3S4C	115/208-230	60	ODP	1.15	4.3/2.3-2.1	24.5
1/2	3600	56	D56 1/2S2C	115/208-230	60	ODP	1.15	6.0/3.06-3.11	24
	1800	56	D56 1/2S4C	115/208-230	60	ODP	1.15	5.8/3.0-2.8	25
3/4	3600	56	D56 3/4S2C	115/208-230	60	ODP	1.15	8.1/4.2-4.1	26
	1800	56	D56 3/4S4C	115/208-230	60	ODP	1.15	8.2/4-4.22	29
1	3600	56	D56 1S2C	115/208-230	60	ODP	1.15	9.66/5.37-5.24	30
	1800	56	D56 1S4C	115/208-230	60	ODP	1.15	9.5/4.73-4.87	38
	1800	143T	D143T1S4C	115/208-230	60	ODP	1.15	11.5/6.0-5.7	41
1.5	3600	56	D56 1.5S2C	115/208-230	60	ODP	1.15	13/6.98-6.58	37
	1800	56	D56 1.5S4C	115/208-230	60	ODP	1.15	14.2/7.37-7.23	42
	1800	145T	D145T1.5S4C	115/208-230	60	ODP	1.15	15/8.1-7.6	45
2	3600	145T	D145T1.5S2C	115/208-230	60	ODP	1.15	14.5/8.0-7.6	41
	3600	56	D56 2S2C	115/208-230	60	ODP	1.15	17.24/8.55-7.96	44
	1800	56	D56 2S4C	115/208-230	60	ODP	1.15	18.9/9.96	47
	1800	145T	D145T2S4C	115/208-230	60	ODP	1.15	19.0/10-9.3	50
3	3600	145T	D145T2S2C	115/208-230	60	ODP	1.15	18/10.2-9.4	48
	3600	56	D56 3S2C	115/208-230	60	ODP	1.15	12.59-11.28/5.97	60
	3600	145T	D145T3S2C	115/208-230	60	ODP	1.15	25/14.2-13	67
	1800	182T	D182T3S4C	208-230	60	ODP	1.15	13.5-12/6.2	88
5	3600	184T	D184T5S2C	208-230	60	ODP	1.15	22-20/10	95
	1800	184T	D184T5S4C	208-230	60	ODP	1.15	22.5-20/10	96
7.5	1800	213T	D213T7.5S4C	208-230	60	ODP	1.15	32.8-30/15.2	153
10	1800	215T	D215T10S4C	208-230	60	ODP	1.15	41.2-39/19.5	190

Single-Phase, Totally Enclosed, General Purpose, Capacitor Start & Run Motor

Features:

- HP: 1/3–10HP
- Pole: 2P, 4P
- Frame: 56–215T
- Enclosure: TEFC
- IP Class: IP44
- Service Factor: 1.15
- Capacitor Start and Capacitor Run
- Accept C–face Kit
- Accept Manual or Auto Thermal Protector
- CSA&CUS certified



HP	RPM 60HZ	NEMA FRAME	Model	Volts	HZ	ENCL.	S.F	Full Load AMPS	WGT. LBS.
1/3	3600	56	F56 1/3S2C	115/208-230	60	TEFC	1.15	4.55/2.19-2.36	23
	1800	56	F56 1/3S4C	115/208-230	60	TEFC	1.15	4.99/2.31-2.58	23
1/2	3600	56	F56 1/2S2C	115/208-230	60	TEFC	1.15	6.01/3.06-3.11	24
	1800	56	F56 1/2S4C	115/208-230	60	TEFC	1.15	6.68/3.11-3.45	25
3/4	3600	56	F56 3/4S2C	115/208-230	60	TEFC	1.15	8.47/4.18-4.29	26
	1800	56	F56 3/4S4C	115/208-230	60	TEFC	1.15	8.27/4-4.22	29
1	3600	56	F56 1S2C	115/208-230	60	TEFC	1.15	9.44/5.06-4.9	30
	1800	56	F56 1S4C	115/208-230	60	TEFC	1.15	9.7/4.89-5.04	38
	1800	143T	F143T1S4C	115/208-230	60	TEFC	1.15	9.3/5.18-4.78	40
1.5	3600	56	F56 1.5S2C	115/208-230	60	TEFC	1.15	13.14/7.33-6.77	38
	1800	56	F56 1.5S4C	115/208-230	60	TEFC	1.15	13.63/7.09-6.66	43.8
	1800	145T	F145T1.5S4C	115/208-230	60	TEFC	1.15	13.3/7.1-6.6	45
2	3600	145T	F145T1.5S2C	115/208-230	60	TEFC	1.15	13.1/7.0-6.6	40
	3600	56	F56 2S2C	115/208-230	60	TEFC	1.15	15.3/8.48-7.8	44
	1800	56	F56 2S4C	115/208-230	60	TEFC	1.15	16.51/9.08-8.27	47
	1800	145T	F145T2S4C	115/208-230	60	TEFC	1.15	16.51/9.08-8.27	55
3	3600	145T	F145T2S2C	115/208-230	60	TEFC	1.15	16.5/9.2-8.4	50
	3600	56	F56 3S2C	115/208-230	60	TEFC	1.15	24.0/13-12.3	62
	3600	145T	F145T3S2C	115/208-230	60	TEFC	1.15	24.0/13-12.3	67
	1800	182T	F182T3S4A	208-230/460	60	TEFC	1.15	14.5-12.55/6.35	91.5
5	3600	184T	F184T5S2A	208-230/460	60	TEFC	1.15	22.95-19.75/10	95
	1800	184T	F184T5S4A	208-230/460	60	TEFC	1.15	23.4-20.3/10.3	110
7.5	1800	213T	F213T7.5S4A	208-230/460	60	TEFC	1.15	33.8-29.5/14.86	153
10	1800	215T	F215T10S4A	208-230/460	60	TEFC	1.15	43-37.8/18.9	190

Single-Phase, Totally Enclosed, General Purpose, Capacitor Start & Run Motor

Features:

- HP: 1/4HP–2HP
- Capacitor Start and Capacitor Run
- Frame: 48–56
- Rolled steel frame
- NEMA design N
- Service factor. 1.15
- Insulation Class F
- Enclosure: ODP
- IP Class: IP23;
- CSA&CUS certified;
- EPACT (CC) certified



HP	RPM	NEMA FRAME	Model	Volts	ENCL.	BRGS.	S.F	Full Load AMPS	WGT. LBS.
1/4	3600	48	SD481/4S2C	115/230	ODP	BALL	1.15	2.31/1.27-1.20	17.0
	1800	48	SD481/4S4C	115/230	ODP	BALL	1.15	2.40/1.31-1.20	18.5
	3600	56	SD561/4S2C	115/230	ODP	BALL	1.15	2.50/1.38-1.30	20.0
	1800	56	SD561/4S4C	115/230	ODP	BALL	1.15	2.42/1.38-1.25	22.0
1/3	3600	48	SD481/3S2C	115/230	ODP	BALL	1.15	2.45/1.35-1.22	17.5
	1800	48	SD481/3S4C	115/230	ODP	BALL	1.15	3.10/1.70-1.55	19.0
	3600	56	SD561/3S2C	115/230	ODP	BALL	1.15	2.91/1.59-1.46	22.0
	1800	56	SD561/3S4C	115/230	ODP	BALL	1.15	2.76/1.63-1.49	23.0
1/2	3600	48	SD481/2S2C	115/230	ODP	BALL	1.15	4.31/2.41-2.20	22.0
	1800	48	SD481/2S4C	115/230	ODP	BALL	1.15	4.40/2.41-2.20	24.0
	3600	56	SD561/2S2C	115/230	ODP	BALL	1.15	4.90/2.61-2.47	25.0
	1800	56	SD56 1/2S4C	115/230	ODP	BALL	1.15	4.27/2.40-2.15	26.0
3/4	3600	48	SD483/4S2C	115/230	ODP	BALL	1.15	6.20/3.40-3.10	24.0
	1800	48	SD483/4S4C	115/230	ODP	BALL	1.15	6.30/3.45-3.20	26.0
	3600	56	SD56 3/4S2C	115/230	ODP	BALL	1.15	6.58/3.61-3.28	27.0
	1800	56	SD563/4S4C	115/230	ODP	BALL	1.15	6.30/3.50/3.20	28.0
1	3600	48	SD481S2C	115/230	ODP	BALL	1.15	7.98/4.37-4.00	25.0
	1800	48	SD481S4C	115/230	ODP	BALL	1.15	7.96/4.36-4.00	27.0
	3600	56	SD561S2C	115/230	ODP	BALL	1.15	8.70/4.80-4.41	30.0
	1800	56	SD561S4C	115/230	ODP	BALL	1.15	8.26/4.62-4.10	31.0
1.5	3600	56	SD561.5S2C	115/230	ODP	BALL	1.15	12.19/6.75-6.12	36.0
	1800	56	SD56 .5S4C	115/230	ODP	BALL	1.15	11.61/6.64-5.91	37.0
2	3600	56	SD562S2C	115/230	ODP	BALL	1.15	15.35/8.50-7.71	41.0
	1800	56	SD562S4C	115/230	ODP	BALL	1.15	16.81/9.23-8.35	44.0
3	3600	56	SD563S2A	208-230	ODP	BALL	1.15	12.40-11.23	40.0

Three Phase Fractional Horsepower Premium Efficiency Motor

Features:

- HP: 1/4HP–2HP
- Frame: 48–56
- Rolled steel frame
- NEMA design B
- Service factor. 1.15
- Insulation Class F
- Enclosure: ODP
- IP Class: IP23;
- CSA&CUS certified;
- CC、EEV certified;



HP	RPM	NEMA FRAME	Model	Volts	ENCL.	BRGS.	S.F	Full Load AMPS	WGT. LBS.
1/4	3600	48	SD481/4M2A	208-230/460	ODP	BALL	1.15	1.32-1.20/0.60	12.0
	1800	48	SD481/4M4A	208-230/460	ODP	BALL	1.15	1.39-1.26/0.63	13.0
	3600	56	SD561/4M2A	208-230/460	ODP	BALL	1.15	1.32-1.20/0.60	14.5
	1800	56	SD561/4M4A	208-230/460	ODP	BALL	1.15	1.41-1.28/0.64	17.0
1/3	3600	48	SD481/3M2A	208-230/460	ODP	BALL	1.15	1.54-1.40/0.70	12.0
	1800	48	SD481/3M4A	208-230/460	ODP	BALL	1.15	1.48-1.34/0.67	13.2
	3600	56	SD561/3M2A	208-230/460	ODP	BALL	1.15	1.55-1.40/0.70	14.7
	1800	56	SD561/3M4A	208-230/460	ODP	BALL	1.15	1.68-1.52/0.76	17.3
1/2	3600	48	SD481/2M2A	208-230/460	ODP	BALL	1.15	2.10-1.90/0.95	13.0
	1800	48	SD481/2M4A	208-230/460	ODP	BALL	1.15	1.88-1.70/0.85	15.0
	3600	56	SD561/2M2A	208-230/460	ODP	BALL	1.15	2.10-1.90/0.95	15.0
	1800	56	SD56 1/2M4A	208-230/460	ODP	BALL	1.15	2.17-1.96/0.98	20.0
3/4	3600	48	SD483/4M2A	208-230/460	ODP	BALL	1.15	2.65-2.40/1.20	16.0
	1800	48	SD483/4M4A	208-230/460	ODP	BALL	1.15	2.87-2.60/1.30	17.5
	3600	56	SD56 3/4M2A	208-230/460	ODP	BALL	1.15	2.65-2.40/1.20	19.0
	1800	56	SD563/4M4A	208-230/460	ODP	BALL	1.15	2.87-2.60/1.30	22.5
1	3600	48	SD481M2A	208-230/460	ODP	BALL	1.15	3.16-2.86/1.43	19.0
	1800	48	SD481M4A	208-230/460	ODP	BALL	1.15	3.53-3.20/1.60	21.0
	3600	56	SD561M2A	208-230/460	ODP	BALL	1.15	3.50-3.20/1.60	22.0
	1800	56	SD561M4A	208-230/460	ODP	BALL	1.15	3.50-3.20/1.60	27.5
1.5	3600	56	SD561.5M2A	208-230/460	ODP	BALL	1.15	4.70-4.30/2.15	25.0
	1800	56	SD561.5M4A	208-230/460	ODP	BALL	1.15	5.00-4.50/2.25	32.0
2	3600	56	SD562M2A	208-230/460	ODP	BALL	1.15	5.80-5.30/2.65	30.0
	1800	56	SD562M4A	208-230/460	ODP	BALL	1.15	6.30-5.90/2.95	35.0
3	3600	56	SD563M2A	208-230/460	ODP	BALL	1.15	8.40-7.70/3.85	34.0

56 Frame Drip-proof Single-Phase Jet Pump Motor

Features:

- HP: 1/3HP–3HP
- Capacitor Start
- Frame: 56J
- Rolled Steel
- NEMA design: N
- Service Factor:1.15
- Insulation Class: F(UL approved)
- Enclosure: ODP
- IP Class: IP23
- CSA&CUS certified



HP	RPM	NEMA FRAME	Model	Volts	HZ	ENCL.	S.F	Full Load AMPS	WGT. LBS.
1/3	3600	56J	D56J 1/3S2C-C	115/230	60	ODP	1.15	6.4/3.5	25
1/2	3600	56J	D56J 1/2S2C-C	115/230	60	ODP	1.15	7.9/4	26
3/4	3600	56J	D56J 3/4S2C-C	115/230	60	ODP	1.15	9.6/4.8	28
1	3600	56J	D56J 1S2C-C	115/230	60	ODP	1.15	11.4/5.8	30
1.5	3600	56J	D56J 1.5S2C-C	115/230	60	ODP	1.15	15.7/7.8	33
2	3600	56J	D56J 2S2C-C	115/230	60	ODP	1.15	20.8/10.4	47
3	3600	56J	D56J 3S2C-C	115/230	60	ODP	1.15	28.5/14.3	57

56 Frame Dripproof Three-Phase Jet Pump Motor

Features:

- HP: 1/3HP-3HP
- Pole: 2P
- Frame: 56J
- Rolled Steel
- NEMA design: B
- Service Factor: 1.15
- Insulation Class: F (UL approved)
- Enclosure: ODP
- IP Class: IP23
- CSA&CUS certified



HP	RPM	NEMA FRAME	Model	Volts	HZ	ENCL.	S.F	Full Load AMPS	WGT. LBS.
1/3	3600	56J	D56J 1/3M2A	230/460	60	ODP	1.15	1.7/0.85	18
	3600	56J	D56J 1/3M2D	575	60	ODP	1.15	0.68	18
1/2	3600	56J	D56J 1/2M2A	230/460	60	ODP	1.15	2.0/1.0	23
	3600	56J	D56J 1/2M2D	575	60	ODP	1.15	0.80	23
3/4	3600	56J	D56J 3/4M2A	230/460	60	ODP	1.15	2.6/1.3	23.5
	3600	56J	D56J 3/4M2D	575	60	ODP	1.15	1.05	23.5
1	3600	56J	D56J 1M2A	230/460	60	ODP	1.15	3.4/1.7	24
	3600	56J	D56J 1M2D	575	60	ODP	1.15	1.36	24
1.5	3600	56J	D56J 1.5M2A	230/460	60	ODP	1.15	4.4/2.2	29
	3600	56J	D56C 1.5M2D	575	60	ODP	1.15	1.76	29
2	3600	56J	D56J 2M2A	230/460	60	ODP	1.15	5.1/2.85	33
	3600	56J	D56J 2M2D	575	60	ODP	1.15	2.28	33
3	3600	56J	D56J 3M2A	230/460	60	ODP	1.15	7.8/3.9	38
	3600	56J	D56J 3M2D	575	60	ODP	1.15	3.12	38

56 Frame Totally Enclosed Three-Phase Jet Pump Motor

Features:

- HP: 1/3HP-3HP
- Pole: 2P
- Frame: 56J
- Rolled Steel
- NEMA design: B
- Service Factor: 1.15
- Insulation Class: F (UL approved)
- Enclosure: TEFC
- IP Class: IP44
- CSA&CUS certified



HP	RPM	NEMA FRAME	Model	Volts	HZ	ENCL.	S.F	Full Load AMPS	WGT. LBS.
1/3	3600	56J	F56J 1/3M2A	230/460	60	TEFC	1.15	1.7/0.85	22.5
	3600	56J	F56J 1/3M2D	575	60	TEFC	1.15	0.68	22.5
1/2	3600	56J	F56J 1/2M2A	230/460	60	TEFC	1.15	2.0/1.0	24.5
	3600	56J	F56J 1/2M2D	575	60	TEFC	1.15	0.80	24.5
3/4	3600	56J	F56J 3/4M2A	230/460	60	TEFC	1.15	2.6/1.3	25
	3600	56J	F56J 3/4M2D	575	60	TEFC	1.15	1.05	25
1	3600	56J	F56J 1M2A	230/460	60	TEFC	1.15	3.4/1.7	25.5
	3600	56J	F56J 1M2D	575	60	TEFC	1.15	1.36	25.5
1.5	3600	56J	F56J 1.5M2A	230/460	60	TEFC	1.15	4.4/2.2	31
	3600	56J	F56J 1.5M2D	575	60	TEFC	1.15	1.76	31
2	3600	56J	F56J 2M2A	230/460	60	TEFC	1.15	5.1/2.85	35
	3600	56J	F56J 2M2D	575	60	TEFC	1.15	2.28	35
3	3600	56J	F56J 3M2A	230/460	60	TEFC	1.15	7.8/3.9	40
	3600	56J	F56J 3M2D	575	60	TEFC	1.15	3.12	40

Three-Phase JM Close-Coupled Pump Motor

Features:

- HP: 1HP–10HP
- Pole: 2P, 4P
- Frame: 140JM, 180JM, 210JM
- Rolled steel
- NEMA design: B
- Service factor: 1.15
- Insulation Class: F (UL approved)
- Enclosure: TEFC
- IP Class: IP44
- CSA&CUS certified
- EPACT (CC) & EEV certified



HP	RPM 60HZ	NEMA FRAME	Model	Volts	HZ	ENCL.	S.F	Full Load AMPS	WGT. LBS.
1	3600	143JM	F143JM1M2A	208-230/460	60	TEFC	1.15	3.5-3.2/1.6	41
	3600	143JM	F143JM1M2D	575	60	TEFC	1.15	1.28	41
	1800	143JM	F143JM1M4A	208-230/460	60	TEFC	1.15	3.7-3.4/1.7	56
	1800	143JM	F143JM1M4D	575	60	TEFC	1.15	1.36	56
1.5	3600	143JM	F143JM1.5M2A	208-230/460	60	TEFC	1.15	4.6-4.2/2.1	51
	3600	143JM	143JM1.5M2D	575	60	TEFC	1.15	1.68	51
	1800	145JM	F145JM1.5M4A	208-230/460	60	TEFC	1.15	5.5-5.0/2.5	60
	1800	145JM	F145JM1.5M4D	575	60	TEFC	1.15	2.0	60
2	3600	145JM	F145JM2M2A	208-230/460	60	TEFC	1.15	5.7-5.2/2.6	53
	3600	145JM	F145JM2M2D	575	60	TEFC	1.15	2.08	53
	1800	145JM	F145JM2M4A	208-230/460	60	TEFC	1.15	6.6-6.0/3.0	63
	1800	145JM	F145JM2M4D	575	60	TEFC	1.15	2.24	63
3	3600	182JM	F182JM3M2A	208-230/460	60	TEFC	1.15	8.3-7.6/3.8	81
	3600	182JM	F182JM3M2D	575	60	TEFC	1.15	3.05	81
	1800	182JM	F182JM3M4A	208-230/460	60	TEFC	1.15	8.6-7.8/3.9	100
	1800	182JM	F182JM3M4D	575	60	TEFC	1.15	3.2	100
5	3600	184JM	F184JM5M2A	208-230/460	60	TEFC	1.15	13.5-12.2/6.1	102
	3600	184JM	F184JM5M2D	575	60	TEFC	1.15	4.8	102
	1800	184JM	F184JM5M4A	208-230/460	60	TEFC	1.15	14.3-13.0/6.5	106
	1800	184JM	F184JM5M4D	575	60	TEFC	1.15	5.28	106
7.5	3600	213JM	F213JM7.5M2A	208-230/460	60	TEFC	1.15	20.2-18.4/9.2	137
	3600	213JM	F213JM7.5M2D	575	60	TEFC	1.15	7.12	137
	1800	213JM	F213JM7.5M4A	208-230/460	60	TEFC	1.15	20.7-18.8/9.4	150
	1800	213JM	F213JM7.5M4D	575	60	TEFC	1.15	7.35	150
10	3600	215JM	F215JM10M2A	208-230/460	60	TEFC	1.15	26.0-23.6/11.8	148
	3600	215JM	F215JM10M2D	575	60	TEFC	1.15	9.45	148
	1800	215JM	F215JM10M4A	208-230/460	60	TEFC	1.15	27.5-25.0/12.5	157
	1800	215JM	F215JM10M4D	575	60	TEFC	1.15	10.0	157

Three-Phase JP Close-Coupled Pump Motor

Features:

- HP: 1HP–10HP
- Pole: 2P, 4P
- Frame: 140JP, 180JP, 210JP
- Rolled steel
- NEMA design: B
- Service factor: 1.15
- Insulation Class: F (UL approved)
- Enclosure: TEFC
- IP Class: IP44
- CSA&CUS certified
- EPACT (CC) & EEV certified



HP	RPM 60HZ	NEMA FRAME	Model	Volts	HZ	ENCL.	S.F	Full Load AMPS	WGT. LBS.
1	3600	143JP	F143JP1M2A	208-230/460	60	TEFC	1.15	3.5-3.2/1.6	41
	3600	143JP	F143JP1M2D	575	60	TEFC	1.15	1.28	41
	1800	143JP	F143JP1M4A	208-230/460	60	TEFC	1.15	3.7-3.4/1.7	56
	1800	143JP	F143JP1M4D	575	60	TEFC	1.15	1.36	56
1.5	3600	143JP	F143JP1.5M2A	208-230/460	60	TEFC	1.15	4.6-4.2/2.1	51
	3600	143JP	143JP1.5M2D	575	60	TEFC	1.15	1.68	51
	1800	145JP	F145JP1.5M4A	208-230/460	60	TEFC	1.15	5.5-5.0/2.5	60
	1800	145JP	F145JP1.5M4D	575	60	TEFC	1.15	2.0	60
2	3600	145JP	F145JP2M2A	208-230/460	60	TEFC	1.15	5.7-5.2/2.6	53
	3600	145JP	F145JP2M2D	575	60	TEFC	1.15	2.08	53
	1800	145JP	F145JP2M4A	208-230/460	60	TEFC	1.15	6.6-6.0/3.0	63
	1800	145JP	F145JP2M4D	575	60	TEFC	1.15	2.24	63
3	3600	182JP	F182JP3M2A	208-230/460	60	TEFC	1.15	8.3-7.6/3.8	81
	3600	182JP	F182JP3M2D	575	60	TEFC	1.15	3.05	81
	1800	182JP	F182JP3M4A	208-230/460	60	TEFC	1.15	8.6-7.8/3.9	100
	1800	182JP	F182JP3M4D	575	60	TEFC	1.15	3.2	100
5	3600	184JP	F184JP5M2A	208-230/460	60	TEFC	1.15	13.5-12.2/6.1	102
	3600	184JP	F184JP5M2D	575	60	TEFC	1.15	4.8	102
	1800	184JP	F184JP5M4A	208-230/460	60	TEFC	1.15	14.3-13.0/6.5	106
	1800	184JP	F184JP5M4D	575	60	TEFC	1.15	5.28	106
7.5	3600	213JP	F213JP5M2A	208-230/460	60	TEFC	1.15	20.2-18.4/9.2	137
	3600	213JP	F213JP7.5M2D	575	60	TEFC	1.15	7.12	137
	1800	213JP	F213JP7.5M4A	208-230/460	60	TEFC	1.15	20.7-18.8/9.4	150
	1800	213JP	F213JP7.5M4D	575	60	TEFC	1.15	7.35	150
10	3600	215JP	F215JP10M2A	208-230/460	60	TEFC	1.15	26.0-23.6/11.8	148
	3600	215JP	F215JP10M2D	575	60	TEFC	1.15	9.45	148
	1800	215JP	F215JP10M4A	208-230/460	60	TEFC	1.15	27.5-25.0/12.5	157
	1800	215JP	F215JP10M4D	575	60	TEFC	1.15	10.0	157

Hydraulic Pump Motor

Features:

- HP: 1HP-3HP
- Pole: 2P, 4P
- Frame: 56C, 56HC
- Rolled steel
- NEMA design: B
- Service factor: 1.15
- Insulation Class: F (UL approved)
- Enclosure: TEFC
- IP Class: IP44
- CSA&CUS certified



HP	RPM	NEMA FRAME	Model	Volts	HZ	PH	ENCL.	S.F	Full Load AMPS	WGT. LBS.
1	1800	56C	F56C1S4C	115/230	60	1	TEFC	1.15	9.2/5.0-4.7	38
	3600	56C	F56C1S2C	115/230	60	1	TEFC	1.15	8.3/4.4	30
2	1800	56C	F56C2S4C	115/230	60	1	TEFC	1.15	16.5/8.3	47
	3600	56C	F56C2S2C	115/230	60	1	TEFC	1.15	16.5/8.4	44
3	3600	56HC	F56HC3S2C	230	60	1	TEFC	1.15	13.0	60
1	1800	56C	F56C1M4A	230/460	60	3	TEFC	1.15	3.4/1.7	33
	1800	56C	F56C1M4D	575	60	3	TEFC	1.15	1.4	33
1.5	1800	56C	F561.5M4A	230/460	60	3	TEFC	1.15	5.2/2.6	37
	1800	56C	F56C1.5M4D	575	60	3	TEFC	1.15	2.0	37
2	1800	56C	F56C2M4A	230/460	60	3	TEFC	1.15	6.0/3.0	40
	1800	56C	F56C2M4D	575	60	3	TEFC	1.15	2.5	40
	3600	56C	F56C2M2D	575	60	3	TEFC	1.15	2.1	34
3	1800	56HC	F56HC3M4A	230/460	60	3	TEFC	1.15	9.0/4.5	47
	1800	56HC	F56HC3M4D	575	60	3	TEFC	1.15	3.6	47

Single-Phase Pool and Spa Pump Motor

Features:

- HP: 1/3HP-2HP
- Pole: 2P
- Frame: 56J
- Capacitor Run
- Rolled Steel
- NEMA design: N
- Service Factor: 1.1-1.67
- Insulation Class: F (UL approved)
- Enclosure: ODP
- IP Class: IP23
- CSA&CUS certified



HP	RPM	NEMA FRAME	Model	Volts	HZ	ENCL.	S.F	Full Load AMPS	WGT. LBS.
3/4	3600	56J	D56J3/4S2C-Y-1.67	115/230	60	ODP	1.67	8.6/4.3	24
1	3600	56J	D56J1S2C-Y-1.4	115/230	60	ODP	1.4	10.24/5.51	28
	3600	56J	D56J1S2C-Y-1.65	115/230	60	ODP	1.65	9.65/5	28
1.5	3600	56J	D56J1.5S2C-Y-1.3	115/230	60	ODP	1.3	12.53/6.31	35
2	3600	56J	D56J2S2C-Y-1.1	115/230	60	ODP	1.1	12.53/6.31	43
	3600	56J	D56J2S2C-Y-1.2	115/230	60	ODP	1.2	17.6/8.8	43
	3600	56J	D56J2S2C-Y-1.3	115/230	60	ODP	1.3	17.4/8.7	43

Dripproof Single-Phase Air-Compressor Motor

Features:

- HP: 1HP-10HP
- Pole: 2P, 4P
- Frame: 56-215T
- Start Torque: Tst ≥ 250%
- Enclosure: ODP
- IP Class: IP23
- Service factor: 1.0, 1.15
- CSA&CUS certified
- Accept Manual Thermal Protector



HP	RPM 60HZ	NEMA FRAME	Model	Volts	HZ	ENCL.	S.F	Full Load AMPS	WGT. LBS.
1	3600	56	D56 1S2C	115/208-230	60	ODP	1.15	12/6.4-5.8	30
	1800	56	D56 1S4C	115/208-230	60	ODP	1.15	11.5/6.0-5.7	38
	1800	143T	D143T1S4C	115/208-230	60	ODP	1.15	11.5/6.0-5.7	41
1.5	3600	56	D56 1.5S2C	115/208-230	60	ODP	1.15	14.5/7.8-7.2	37
	1800	56	D56 1.5S4C	115/208-230	60	ODP	1.15	15.5/8.1-7.6	42
	1800	145T	D145T1.5S4C	115/208-230	60	ODP	1.15	15.5/8.1-7.6	45
	3600	145T	D145T1.5S2C	115/208-230	60	ODP	1.15	14.5/8.0-7.6	41
2	3600	56	D56 2S2C	115/208-230	60	ODP	1.15	18/10.1-9.2	44
	1800	56	D56 2S4C	115/208-230	60	ODP	1.15	19.0/10-9.3	47
	1800	145T	D145T2S4C	115/208-230	60	ODP	1.15	19.0/10-9.3	50
	3600	145T	D145T2S2C	115/208-230	60	ODP	1.15	18/10.2-9.4	48
3	3600	56	D56 3S2C	115/208-230	60	ODP	1.15	25/14.2-13	60
	3600	145T	D145T3S2C	115/208-230	60	ODP	1.15	25/14.2-13	67
	1800	182T	D182T3S4A	208-230/460	60	ODP	1.15	13.5-12/6.2	88
5	3600	184T	D184T5S2A	208-230/460	60	ODP	1.15	22-20/10	95
	1800	184T	D184T5S4A	208-230/460	60	ODP	1.15	22.5-20/10	96
6	3600	56	D566S2A	230	60	ODP	1.0	22.8	56
7.5	1800	213T	D213T7.5S4A	208-230/460	60	ODP	1.15	32.8-30/15.2	140
10	1800	215T	D215T10S4A	208-230/460	60	ODP	1.0	41.2-39/19.5	153

Totally Enclosed Single-Phase Air-Compressor Motor

Features:

- HP: 1-10HP
- Pole: 2P, 4P
- Frame: 56-215T
- Start Torque: Tst ≥ 250%
- Enclosure: TEFC
- IP Class: IP44
- Service factor: 1.0, 1.15
- CSA&CUS certified
- Accept Manual Thermal Protector



HP	RPM 60HZ	NEMA FRAME	Model	Volts	HZ	ENCL.	S.F	Full Load AMPS	WGT. LBS.
1	3600	56	F56 1S2C	115/208-230	60	TEFC	1.15	9.44/5.06-4.9	30
	1800	56	F56 1S4C	115/208-230	60	TEFC	1.15	9.7/4.89-5.04	38
	1800	143T	F143T1S4C	115/208-230	60	TEFC	1.15	9.3/5.18-4.78	41
1.5	3600	56	F56 1.5S2C	115/208-230	60	TEFC	1.15	13.14/7.33-6.77	37
	1800	56	F56 1.5S4C	115/208-230	60	TEFC	1.15	13.63/7.09-6.66	42
	1800	145T	F145T1.5S4C	115/208-230	60	TEFC	1.15	13.3/7.1-6.6	45
	3600	145T	F145T1.5S2C	115/208-230	60	TEFC	1.15	13.1/7.0-6.6	41
2	3600	56	F56 2S2C	115/208-230	60	TEFC	1.15	15.3/8.48-7.8	44
	1800	56	F56 2S4C	115/208-230	60	TEFC	1.15	16.51/9.08-8.27	47
	1800	145T	F145T2S4C	115/208-230	60	TEFC	1.15	16.51/9.08-8.27	50
	3600	145T	F145T2S2C	115/208-230	60	TEFC	1.15	16.5/9.2-8.4	48
3	3600	56	F56 3S2C	115/208-230	60	TEFC	1.15	24.0/13-12.3	60
	3600	145T	F145T3S2C	115/208-230	60	TEFC	1.15	24.0/13-12.3	67
	1800	182T	F182T3S4A	208-230/460	60	TEFC	1.15	14.5-12.55/6.35	88
5	3600	184T	F184T5S2A	208-230/460	60	TEFC	1.15	22.95-19.75/10	95
	1800	184T	F184T5S4A	208-230/460	60	TEFC	1.15	23.4-20.3/10.3	96
7.5	1800	213T	F213T7.5S4A	208-230/460	60	TEFC	1.15	33.8-29.5/14.86	153
10	1800	215T	F215T10S4A	208-230/460	60	TEFC	1.0	43-37.8/18.9	190

Farm Duty Motor

Features:

- HP: 1/3HP-10HP
- Pole: 4P
- Frame: 56-215T
- Enclosure: TEFC
- IP Class: IP44
- Service factor: 1.0, 1.15
- Accept Manual Thermal Protector
- Capacitor Start and Capacitor Run
- CSA&CUS certified



HP	RPM 60HZ	NEMA FRAME	Model	Volts	HZ	ENCL.	OVER LOAD	S.F	Full Load AMPS	WGT. LBS.
1/3	1800	56	F561/3S4C	115/208-230	60	TEFC	MANUAL	1.15	1.43	12
1/2	1800	56	F561/2S4C	115/208-230	60	TEFC	MANUAL	1.15	2.56	20
3/4	1800	56	F563/4S4C	115/208-230	60	TEFC	MANUAL	1.15	3.9	38
1	1800	56	F561S4C	115/208-230	60	TEFC	MANUAL	1.15	8.7/5.0-4.5	39.5
	1800	145T	F143T1S4C	115/208-230	60	TEFC	MANUAL	1.15	8.7/5.0-4.5	41
1.5	1800	56H	F56H 1.5S4C	115/208-230	60	TEFC	MANUAL	1.15	13.2/7.4-6.7	55
	1800	145T	F145T1.5S4C	115/208-230	60	TEFC	MANUAL	1.15	13.2/7.3-6.7	57
2	1800	56H	F56H 2S4C	115/208-230	60	TEFC	MANUAL	1.15	17.5/9.6-8.7	65
	1800	145T	F145T2S4C	115/208-230	60	TEFC	MANUAL	1.15	17.5/9.7-8.7	67
	1800	182T	F182T2S4A	230/460	60	TEFC	MANUAL	1.15	11.4/5.7	83
3	1800	184T	F182T3S4A	230/460	60	TEFC	MANUAL	1.15	12/6.2	92
5	1800	184T	F182T5S4A	230/460	60	TEFC	MANUAL	1.15	20/10	110
7.5	1800	215T	F215T7.5S4A	230/460	60	TEFC	MANUAL	1.15	31/16	153
10	1800	215T	F215T10S4A	230/460	60	TEFC	MANUAL	1.0	40/19.5	176

TEAO 48、56 Fan Motor

Features:

- HP: 1/10HP-1.5HP
- Pole: 4P, 6P, 8P
- Frame: 48、56
- Rolled steel
- NEMA design: N
- NEMA service factor: 1.0, 1.4
- Insulation Class: F(UL approved)
- Enclosure: TEAO
- IP Class: IP44, IP55
- Accept Auto Thermal Protector
- CSA&CUS certified



HP	RPM	NEMA FRAME	PH	Model	Volts	HZ	ENCL.	OVER LOAD	S.F	Full Load AMPS	WGT. LBS.
1/10	1625	48	1	A48 1/10S4C	115/230	60	TEAO	AUTO	1.0	1.3/0.65	12
1/8	1625	48	1	A48 1/8S4C	115/230	60	TEAO	AUTO	1.0	1.64/0.84	12
	1080	48	1	A48 1/8S6C	115/230	60	TEAO	AUTO	1.0	1.6/0.8	13
	810	48	1	A48 1/8S8C	115/230	60	TEAO	AUTO	1.0	2.1/1.05	14
1/6	1625	48	1	A48 1/6S4C	115/230	60	TEAO	AUTO	1.0	2.17/1.09	12
	1080	48	1	A48 1/6S6C	115/230	60	TEAO	AUTO	1.0	2.12/1.06	13
	810	48	1	A48 1/6S8C	115/230	60	TEAO	AUTO	1.0	2.75/1.38	14
1/5	1625	48	1	A48 1/5S4C	115/230	60	TEAO	AUTO	1.0	2.2/1.1	12
	1080	48	1	A48 1/5S6C	115/230	60	TEAO	AUTO	1.0	2.6/1.3	13
	810	48	1	A48 1/5S8C	115/230	60	TEAO	AUTO	1.0	2.8/1.4	16
1/4	1625	48	1	A48 1/4S4C	115/230	60	TEAO	AUTO	1.0	2.7/1.4	12
	1080	48	1	A48 1/4S6C	115/230	60	TEAO	AUTO	1.0	3.0/1.5	14
	810	48	1	A48 1/4S8C	115/230	60	TEAO	AUTO	1.0	3.6/1.8	16
1/3	1625	48	1	A48 1/3S4C	115/230	60	TEAO	AUTO	1.0	4.1/2.06	17
	1080	48	1	A48 1/3S6C	115/230	60	TEAO	AUTO	1.0	3.6/1.8	13
	810	48	1	A48 1/3S8C	115/230	60	TEAO	AUTO	1.0	4.2/2.1	18
1/2	1625	48	1	A48 1/2S4C	115/230	60	TEAO	AUTO	1.0	4.9/2.45	20
	1080	48	1	A48 1/2S6C	115/230	60	TEAO	AUTO	1.0	5.1/2.55	21
	810	48	1	A48 1/2S8C	115/230	60	TEAO	AUTO	1.0	7.1/3.7	22
3/4	1625	48	1	A48 3/4S4C	115/230	60	TEAO	AUTO	1.0	6.7/3.5	21
	1080	48	1	A48 3/4S6C	115/230	60	TEAO	AUTO	1.0	7.8/3.9	23
	810	48	1	A48 3/4S8C	115/230	60	TEAO	AUTO	1.0	8.7/4.4	26
	810	56	1	A563/4S8C	115/208-230	60	TEAO	AUTO	1.0	8.1/4.8-4.3	33
1	1625	48	1	A48 1S4C	115/230	60	TEAO	AUTO	1.0	9.5/4.95	22
	1080	48	1	A48 1S6C	115/230	60	TEAO	AUTO	1.0	11.0/5.5	27
	810	48	1	A48 1S8C	115/230	60	TEAO	AUTO	1.0	11.5/6.04	30
	810	56	1	A561S8C	115/208-230	60	TEAO	AUTO	1.0	5.04/2.8-2.5	35
	1750	56	1	A561S4C	115/208-230	60	TEAO	AUTO	1.4	8.7/4.8-4.5	38
	1750	56	3	A561M4A	208-230/460	60	TEAO	AUTO	1.4	4.0-3.6/1.8	26
	810	56	3	A561M8A	208-230/460	60	TEAO	AUTO	1.0	5.6-6.6/3.4	35
1.5	1750	56	1	A561.5S4C	115/208-230	60	TEAO	AUTO	1.4	13.4/7.3-6.8	42
	1750	56	3	A561.5M4A	208-230/460	60	TEAO	AUTO	1.4	6.5-5.9/2.95	37

Single-Phase Brake Motor

Features:

- HP: 1/3HP-2HP
- Pole: 4P
- Frame: 56C
- Enclosure: TEFC
- IP Class: IP44
- Service Factor: 1.15
- Apply to braking requirement situations, such as : sudden parking, elevator, windlass, etc;
- CSA&CUS certified



HP	RPM 60HZ	NEMA FRAME	Model	Volts	HZ	ENCL.	S.F	Full Load AMPS	WGT. LBS.
1/3	1800	56C	F56C1/3S4C-2	115/208-230	60	TEFC	1.15	4.29/2.06-2.26	27
1/2	1800	56C	F56C1/2S4C-2	115/230	60	TEFC	1.15	5.8/2.9	29
3/4	1800	56C	F56C3/4S4C-2	115/208-230	60	TEFC	1.15	8.07/4.04-4.17	33
1	1800	56C	F56C1S4C-2	115/208-230	60	TEFC	1.15	9.3/5.18-4.78	42
1.5	1800	56C	F56C1.5S4C-2	115/230	60	TEFC	1.15	14/6.8	48
2	1800	56C	F56C2S4C-2	115/208-230	60	TEFC	1.15	16.51/9.08-8.27	51

Three-Phase Brake Motor

Features:

- HP: 1/3HP-2HP
- Pole:4P
- Frame: 56C
- Enclosure: TEFC
- IP Class: IP44
- Service Factor:1.15
- Apply to braking requirement situations, such as: sudden parking, elevator, windlass, etc
- CSA&CUS certified



HP	RPM 60HZ	NEMA FRAME	Model	Volts	HZ	ENCL.	S.F	Full Load AMPS	WGT. LBS.
1/3	1800	56C	F56C1/3M4A-2	230/460	60	TEFC	1.15	1.64/0.82	26
	1800	56C	F56C1/3M4D-2	575	60	TEFC	1.15	0.66	26
1/2	1800	56C	F56C1/2M4A-2	230/460	60	TEFC	1.15	2.2/1.1	29
	1800	56C	F56C1/2M4D-2	575	60	TEFC	1.15	0.88	29
3/4	1800	56C	F56C3/4M4A-2	230/460	60	TEFC	1.15	2.8/1.4	32
	1800	56C	F56C3/4M4D-2	575	60	TEFC	1.15	1.12	32
1	1800	56C	F56C1M4A-2	230/460	60	TEFC	1.15	3.6/1.8	37
	1800	56C	F56C1M4D-2	575	60	TEFC	1.15	1.45	37
1.5	1800	56C	F56C1.5M4A-2	230/460	60	TEFC	1.15	4.8/2.4	41
	1800	56C	F56C1.5M4D-2	575	60	TEFC	1.15	1.92	41
2	1800	56C	F56C2M4A-2	230/460	60	TEFC	1.15	5.8/2.9	44
	1800	56C	F56C2M4D-2	575	60	TEFC	1.15	2.1	44

Three-Phase Dripproof High-Efficiency Motor

Features:

- HP: 1HP-20HP
- Pole: 2P,4P, 6P
- Frame: 143T-256T
- Rolled steel
- NEMA design B
- Accept C-face Kit
- Service factor: 1.15
- Insulation Class: F (UL approved)
- Enclosure: ODP
- IP Class: IP23
- CSA&CUS certified
- EPACT(CC) & EEV certified



HP	RPM 60HZ	NEMA FRAME	Model	Volts	HZ	ENCL.	S.F	Full Load AMPS	WGT. LBS.
1	3600	143T	ED143T1M2A	2208-230/460	60	ODP	1.15	3.7-3.4/1.7	31.5
	3600	143T	ED143T1M2D	575	60	ODP	1.15	1.36	31.5
	1800	143T	ED143T1M4A	208-230/460	60	ODP	1.15	3.5-3.2/1.6	40.5
	1800	143T	ED143T1M4D	575	60	ODP	1.15	1.28	40.5
	1200	145T	ED145T1M6A	208-230/460	60	ODP	1.15	4.2-3.8/1.9	40
	1200	145T	ED145T1M6D	575	60	ODP	1.15	1.52	40
1.5	3600	143T	ED143T1.5M2A	208-230/460	60	ODP	1.15	4.6-4.2/2.1	37
	3600	143T	ED143T1.5M2D	575	60	ODP	1.15	1.68	37
	1800	145T	ED145T1.5M4A	208-230/460	60	ODP	1.15	5.1-4.6/2.3	44
	1800	145T	ED145T1.5M4D	575	60	ODP	1.15	1.84	44
	1200	182T	ED182T1.5M6A	208-230/460	60	ODP	1.15	5.6-5.0/2.5	66.5
	1200	182T	ED182T1.5M6D	575	60	ODP	1.15	2.0	66.5
2	3600	145T	ED145T2M2A	208-230/460	60	ODP	1.15	5.9-5.4/2.7	37.5
	3600	145T	ED145T2M2D	575	60	ODP	1.15	2.16	37.5
	1800	145T	ED145T2M4A	208-230/460	60	ODP	1.15	6.8-6.2/3.1	47.5
	1800	145T	ED145T2M4D	575	60	ODP	1.15	2.48	47.5
	1200	184T	ED184T2M6A	208-230/460	60	ODP	1.15	6.8-6.2/3.1	73
	1200	184T	ED184T2M6D	575	60	ODP	1.15	2.5	73
3	3600	145T	ED145T3M2A	208-230/460	60	ODP	1.15	8.8-8.0/4.0	41
	3600	145T	ED145T3M2D	575	60	ODP	1.15	3.2	41
	1800	182T	ED182T3M4A	208-230/460	60	ODP	1.15	8.8-8.0/4.0	78
	1800	182T	ED182T3M4G	220/380	60	ODP	1.15	8.5/4.5	78
	1800	182T	ED182T3M4D	575	60	ODP	1.15	3.2	78
	1200	213T	ED213T3M6A	208-230/460	60	ODP	1.15	9.5-8.6/4.3	103
1200	213T	ED213T3M6D	575	60	ODP	1.15	3.5	103	
5	3600	182T	ED182T5M2A	208-230/460	60	ODP	1.15	14.1-12.8/6.4	73
	3600	182T	ED182T5M2D	575	60	ODP	1.15	5.12	73
	1800	184T	ED184T5M4A	208-230/460	60	ODP	1.15	14.3-13.0/6.5	85
	1800	184T	ED184T5M4G	220/380	60	ODP	1.15	13.5/7.3	85
	1800	184T	ED184T5M4D	575	60	ODP	1.15	5.2	85
	1200	215T	ED215T5M6A	208-230/460	60	ODP	1.15	15.6-14.2/7.1	112
1200	215T	ED215T5M6D	575	60	ODP	1.15	5.7	112	
7.5	3600	184T	ED184T7.5M2A	208-230/460	60	ODP	1.15	19.6-17.8/8.9	79.5
	3600	184T	ED184T7.5M2D	575	60	ODP	1.15	7.12	79.5
	1800	213T	ED213T7.5M4A	208-230/460	60	ODP	1.15	20.9-19.0/9.5	120
	1800	213T	ED213T7.5M4G	220/380	60	ODP	1.15	19.8/10.6	120
	1800	213T	ED213T7.5M4D	575	60	ODP	1.15	7.6	120
10	3600	213T	ED213T10M2A	208-230/460	60	ODP	1.15	27.7-25.2/12.6	114
	3600	213T	ED213T10M2D	575	60	ODP	1.15	10.0	114
	1800	215T	ED215T10M4A	208-230/460	60	ODP	1.15	27.5-25.0/12.5	131
	1800	215T	ED215T10M4G	220/380	60	ODP	1.15	26.5/14	131
	1800	215T	ED215T10M4D	575	60	ODP	1.15	10	131
15	3600	215T	ED215T15M2A	208-230/460	60	ODP	1.15	37.8-34.4/17.2	126
	3600	215T	ED215T15M2D	575	60	ODP	1.15	13.8	126
	1800	254T	ED254T15M4A	208-230/460	60	ODP	1.15	41.8-38.0/19.0	198
	1800	254T	ED254T15M4D	575	60	ODP	1.15	15.2	198
20	1800	256T	ED256T20M4A	208-230/460	60	ODP	1.15	56.5-51.4/25.7	210
	1800	256T	ED256T20M4D	575	60	ODP	1.15	20.6	210

Three-Phase Totally Enclosed High-Efficiency Motor

Features:

- HP: 1HP-10HP
- Pole: 2P, 4P, 6P
- Frame: 143T-215T
- Rolled steel
- NEMA design B
- Accept C-Face Kit
- Service factor: 1.15
- Insulation Class: F (UL approved)
- Enclosure: TEFC
- IP Class: IP44
- CSA&CUS certified
- EPACT (CC) & EEV certified



HP	RPM 60HZ	NEMA FRAME	Model	Volts	HZ	ENCL.	S.F	Full Load AMPS	% EFF.	WGT. LBS.
1	3600	143T	EF143T1M2A	208-230/460	60	TEFC	1.15	3.5-3.2/1.6	75.5	34
	3600	143T	EF143T1M2D	575	60	TEFC	1.15	1.28	75.5	34
	1800	143T	EF143T1M4A	208-230/460	60	TEFC	1.15	3.7-3.4/1.7	82.5	48
	1800	143T	EF143T1M4D	575	60	TEFC	1.15	1.36	82.5	48
	1200	145T	EF145T1M6A	208-230/460	60	TEFC	1.15	4.4-4.0/2.0	80.0	47
	1200	145T	EF145T1M6D	575	60	TEFC	1.15	1.6	80.0	47
1.5	3600	143T	EF143T1.5M2A	208-230/460	60	TEFC	1.15	4.6-4.2/2.1	82.5	43
	3600	143T	EF143T1.5M2D	575	60	TEFC	1.15	1.68	82.5	43
	1800	145T	EF145T1.5M4A	208-230/460	60	TEFC	1.15	5.5-5.0/2.5	84.0	52
	1800	145T	EF145T1.5M4D	575	60	TEFC	1.15	2.0	84.0	52
	1200	182T	EF182T1.5M6A	208-230/460	60	TEFC	1.15	5.5-5.0/2.5	87.2	66.5
	1200	182T	EF182T1.5M6D	575	60	TEFC	1.15	2.0	87.2	66.5
2	3600	145T	EF145T2M2A	208-230/460	60	TEFC	1.15	5.7-5.2/2.6	84.0	45
	3600	145T	EF145T2M2D	575	60	TEFC	1.15	2.08	84.0	45
	1800	145T	EF145T2M4A	208-230/460	60	TEFC	1.15	6.6-6.0/3.0	84.0	55
	1800	145T	EF145T2M4D	575	60	TEFC	1.15	2.24	84.0	55
	1200	184T	EF184T2M6A	208-230/460	60	TEFC	1.15	7.3-6.6/3.3	86.5	85
	1200	184T	EF184T2M6D	575	60	TEFC	1.15	2.56	86.5	85
3	3600	182T	EF182T3M2A	208-230/460	60	TEFC	1.15	8.4-7.6/3.8	85.5	69
	3600	182T	EF182T3M2D	575	60	TEFC	1.15	3.05	85.5	69
	1800	182T	EF182T3M4A	208-230/460	60	TEFC	1.15	8.6-7.8/3.9	87.5	88
	1800	182T	EF182T3M4D	575	60	TEFC	1.15	2.89	87.5	88
	1200	213T	EF213T3M6A	208-230/460	60	TEFC	1.15	10.8-9.8/4.9	87.5	118
	1200	213T	EF213T3M6D	575	60	TEFC	1.15	3.84	87.5	118
5	3600	184T	EF184T5M2A	208-230/460	60	TEFC	1.15	13.4-12.2/6.1	87.5	88
	3600	184T	EF184T5M2D	575	60	TEFC	1.15	4.8	87.5	88
	1800	184T	EF184T5M4A	208-230/460	60	TEFC	1.15	14.3-13.0/6.5	87.5	95
	1800	184T	EF184T5M4D	575	60	TEFC	1.15	5.2	87.5	95
	1200	215T	EF215T5M6A	208-230/460	60	TEFC	1.15	16.5-15.0/7.5	87.5	128
	1200	215T	EF215T5M6D	575	60	TEFC	1.15	6.0	87.5	128
7.5	3600	213T	EF213T7.5M2A	208-230/460	60	TEFC	1.15	20.2-18.4/9.2	88.5	121
	3600	213T	EF213T7.5M2D	575	60	TEFC	1.15	7.12	88.5	121
	1800	213T	EF213T7.5M4A	208-230/460	60	TEFC	1.15	20.7-18.8/9.4	89.5	137
	1800	213T	EF213T7.5M4D	575	60	TEFC	1.15	7.35	89.5	137
10	3600	215T	EF215T10M2A	208-230/460	60	TEFC	1.15	26.0-23.6/11.8	89.5	134
	3600	215T	EF215T10M2D	575	60	TEFC	1.15	9.45	89.5	134
	1800	215T	EF215T10M4A	208-230/460	60	TEFC	1.15	27.5-25.0/12.5	89.5	146
	1800	215T	EF215T10M4D	575	60	TEFC	1.15	10.0	89.5	146

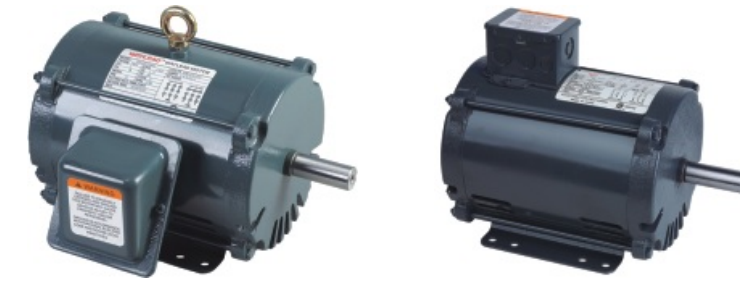
Dripproof Premium Efficiency Motor

Features:

- HP: 1HP–20HP
- Pole: 2P, 4P, 6P
- Frame: 56–256T
- Rolled steel
- NEMA design: B
- Accept C–face Kit
- Service factor: 1.15
- Insulation Class: F, H (UL approved)
- Enclosure: ODP
- IP Class: IP23
- CSA&CUS certified
- EPACT (CC) & EEV certified

SD56–215T 208–230/460V Three Phase Premium Efficiency Motor Data

HP	RPM 60HZ	NEMA FRAME	Model	Volts	HZ	ENCL.	S.F	Full Load AMPS	% EFF.	WGT. LBS.
1	3600	56	SD561M2A	208-230/460	60	ODP	1.15	3.5-3.2/1.6	77	33
	3600	143T	SD143T1M2A	208-230/460	60	ODP	1.15	3.5-3.2/1.6	77	34
	1800	56	SD561M4A	208-230/460	60	ODP	1.15	3.5-3.2/1.6	85.5	43
	1800	143T	SD143T1M4A	208-230/460	60	ODP	1.15	3.5-3.2/1.6	85.5	44
	1200	56	SD561M6A	208-230/460	60	ODP	1.15	3.9-3.6/1.8	82.5	43
	1200	145T	SD145T1M6A	208-230/460	60	ODP	1.15	3.9-3.6/1.8	82.5	44
1.5	3600	56	SD561.5M2A	208-230/460	60	ODP	1.15	4.7-4.3/2.15	83.8	40
	3600	143T	SD143T1.5M2A	208-230/460	60	ODP	1.15	4.7-4.3/2.15	83.8	41
	1800	56	SD561.5M4A	208-230/460	60	ODP	1.15	5.0-4.5/2.25	82.6	47
	1800	145T	SD145T1.5M4A	208-230/460	60	ODP	1.15	5.0-4.5/2.25	82.6	48
2	1200	182T	SD182T1.5M6A	208-230/460	60	ODP	1.15	5.2-4.8/2.4	82.6	70
	3600	56	SD562M2A	208-230/460	60	ODP	1.15	5.8-5.3/2.65	84.2	40
	3600	145T	SD145T2M2A	208-230/460	60	ODP	1.15	5.8-5.3/2.65	84.2	41
	1800	56	SD562M4A	208-230/460	60	ODP	1.15	6.3-5.9/2.95	86.5	50
3	1800	145T	SD145T2M4A	208-230/460	60	ODP	1.15	6.3-5.9/2.95	86.5	51
	1200	184T	SD184T2M6A	208-230/460	60	ODP	1.15	6.5-6.0/3.0	86.5	78
	3600	56	SD563M2A	208-230/460	60	ODP	1.15	8.4-7.7/3.85	87.5	44
	3600	145T	SD145T3M2A	208-230/460	60	ODP	1.15	8.4-7.7/3.85	84.7	45
5	1800	182T	SD182T3M4A	208-230/460	60	ODP	1.15	9.4-8.6/4.3	84.7	82
	1200	213T	SD213T3M6A	208-230/460	60	ODP	1.15	9.0-8.2/4.1	89.5	110
	3600	182T	SD182T5M2A	208-230/460	60	ODP	1.15	13.6-12.4/6.2	88.8	76
	1800	184T	SD184T5M4A	208-230/460	60	ODP	1.15	14.0-13.2/6.6	89.5	92
7.5	1200	215T	SD215T5M6A	208-230/460	60	ODP	1.15	15.0-13.6/6.8	89.5	121
	3600	184T	SD184T7.5M2A	208-230/460	60	ODP	1.15	19.0-17.6/8.8	88.7	83
	1800	213T	SD213T7.5M4A	208-230/460	60	ODP	1.15	21.6-19.8/9.9	89.9	132
	3600	213T	SD213T10M2A	208-230/460	60	ODP	1.15	26.0-23.6/11.8	89.3	120
10	1800	215T	SD215T10M4A	208-230/460	60	ODP	1.15	29-26.6/13.3	89.5	145
	3600	215T	SD215T15M2A	208-230/460	60	ODP	1.15	38.0-34.4/17.2	89.1	134
15	1800	254T	SD254T15M4A	208-230/460	60	ODP	1.15	42.0-38.4/19.2	93	201
	20	1800	256T	SD256T20M4A	208-230/460	60	ODP	1.15	57.0-52.0/26.0	92.3



SD56–215T 575V Three Phase Premium Efficiency Motor Data

HP	RPM 60HZ	NEMA FRAME	Model	Volts	HZ	ENCL.	S.F	Full Load AMPS	% EFF.	WGT. LBS.
1	3600	56	SD561M2D	575	60	ODP	1.15	1.3	77	33
	3600	143T	SD143T1M2D	575	60	ODP	1.15	1.3	77	34
	1800	56	SD561M4D	575	60	ODP	1.15	1.1	85.5	43
	1800	143T	SD143T1M4D	575	60	ODP	1.15	1.1	85.5	44
	1200	56	SD561M6D	575	60	ODP	1.15	1.4	82.5	43
1.5	1200	145T	SD145T1M6D	575	60	ODP	1.15	1.4	82.5	44
	3600	56	SD561.5M2D	575	60	ODP	1.15	1.9	84	40
	3600	143T	SD143T1.5M2D	575	60	ODP	1.15	1.9	83.9	41
	1800	56	SD561.5M4D	575	60	ODP	1.15	1.8	86.5	47
	1800	145T	SD145T1.5M4D	575	60	ODP	1.15	1.8	80.9	48
2	1200	182T	SD182T1.5M6D	575	60	ODP	1.15	1.9	86.5	70
	3600	56	SD562M2D	575	60	ODP	1.15	2.20	85.5	40
	3600	145T	SD145T2M2D	575	60	ODP	1.15	2.20	85.5	41
	1800	56	SD562M4D	575	60	ODP	1.15	2.3	86.5	50
	1800	145T	SD145T2M4D	575	60	ODP	1.15	2.3	86.5	51
3	1200	184T	SD184T2M6D	575	60	ODP	1.15	2.5	87.5	78
	3600	56	SD563M2D	575	60	ODP	1.15	3.5	85.5	44
	3600	145T	SD145T3M2D	575	60	ODP	1.15	3.5	85.5	45
	1800	182T	SD182T3M4D	575	60	ODP	1.15	3.3	89.5	82
5	1200	213T	SD213T3M6D	575	60	ODP	1.15	3.3	88.5	110
	3600	182T	SD182T5M2D	575	60	ODP	1.15	4.9	86.5	76
	1800	184T	SD184T5M4D	575	60	ODP	1.15	5.4	89.5	92
	1200	215T	SD215T5M6D	575	60	ODP	1.15	5.4	89.5	121
7.5	3600	184T	SD184T7.5M2D	575	60	ODP	1.15	7.1	88.5	83
	1800	213T	SD213T7.5M4D	575	60	ODP	1.15	7.8	91.0	132
10	3600	213T	SD213T10M2D	575	60	ODP	1.15	9.45	89.5	120
	1800	215T	SD215T10M4D	575	60	ODP	1.15	10.5	91.7	145
15	3600	215T	SD215T15M2D	575	60	ODP	1.15	13.8	90.2	134
	1800	254T	SD254T15M4D	575	60	ODP	1.15	15.5	92.7	201
20	1800	256T	SD256T20M4D	575	60	ODP	1.15	20.8	92.1	223

Totally Enclosed Premium Efficiency Motor

Features:

- HP: 1HP-10HP
- Pole: 2P,4P,6P
- Frame: 56-215T
- Rolled steel
- NEMA design: B
- Accept C-face kit
- Service factor: 1.15
- Insulation Class: F, H (UL approved)
- Enclosure: TEFC
- IP Class: IP44
- CSA&CUS certified
- EPACK (CC) & EEV certified

SF56-215T 208-230/460V Three Phase Premium Efficiency Motor Data

HP	RPM 60HZ	NEMA FRAME	Model	Volts	HZ	ENCL.	S.F	Full Load AMPS	% EFF.	WGT. LBS.
1	3600	56	SF561M2A	208-230/460	60	TEFC	1.15	4.0-3.6/1.8	77	34
	3600	143T	SF143T1M2A	208-230/460	60	TEFC	1.15	4.0/3.6/1.8	77	35
	1800	56	SF561M4A	208-230/460	60	TEFC	1.15	3.3-3.0/1.5	85.5	44
	1800	143T	SF143T1M4A	208-230/460	60	TEFC	1.15	3.3-3.0/1.5	85.5	45
	1800	56	SF561M6A	208-230/460	60	TEFC	1.15	3.6-3.4/1.7	82.5	44
	1200	145T	SF145T1M6A	208-230/460	60	TEFC	1.15	3.6-3.4/1.7	82.5	45
1.5	3600	56	SF561.5M2A	208-230/460	60	TEFC	1.15	4.3-4.0/2.0	84	41
	3600	143T	SF143T1.5M2A	208-230/460	60	TEFC	1.15	4.3-4.0/2.0	83.6	42
	1800	56	SF561.5M4A	208-230/460	60	TEFC	1.15	4.8-4.4/2.2	86.5	49
	1800	145T	SF145T1.5M4A	208-230/460	60	TEFC	1.15	4.8-4.4/2.2	80.5	52
	1200	182T	SF182T1.5M6A	208-230/460	60	TEFC	1.15	4.8-4.4/2.2	84.5	79
2	3600	56	SF562M2A	208-230/460	60	TEFC	1.15	5.4-5.0/2.5	85.5	45
	3600	145T	SF145T2M2A	208-230/460	60	TEFC	1.15	5.4-5.0/2.5	85.4	46
	1800	56	SF562M4A	208-230/460	60	TEFC	1.15	6.5-6.0/3.0	86.5	55
	1800	145T	SF145T2M4A	208-230/460	60	TEFC	1.15	6.5-6.0/3.0	86.9	56
	1200	184T	SF184T2M6A	208-230/460	60	TEFC	1.15	6.8-6.0/3.0	88.5	87
3	3600	182T	SF182T3M2A	208-230/460	60	TEFC	1.15	8.2-7.6/3.8	85.9	78
	1800	182T	SF182T3M4A	208-230/460	60	TEFC	1.15	8.6-8.0/4.0	88	93
	1200	213T	SF213T3M6A	208-230/460	60	TEFC	1.15	9.0-8.4/4.2	89.5	123
	3600	184T	SF184T5M2A	208-230/460	60	TEFC	1.15	13.0-11.8/5.9	89.2	84
5	1800	184T	SF184T5M4A	208-230/460	60	TEFC	1.15	13.5-12.4/6.2	88.3	101
	1200	215T	SF215T5M6A	208-230/460	60	TEFC	1.15	15.0-13.6/6.8	89.5	130
	3600	213T	SF213T7.5M2A	208-230/460	60	TEFC	1.15	20.0-18.4/9.2	88.8	91
7.5	1800	213T	SF213T7.5M4A	208-230/460	60	TEFC	1.15	21.0-19.2/9.6	89.6	146
	3600	215T	SF215T10M2A	208-230/460	60	TEFC	1.15	26.0-24.0/12.0	90.2	135
10	1800	215T	SF215T10M4A	208-230/460	60	TEFC	1.15	27.5-25.2/12.6	89.6	165



SF56-215T 575V Three Phase Premium Efficiency Motor Data

HP	RPM 60HZ	NEMA FRAME	Model	Volts	HZ	ENCL.	S.F	Full Load AMPS	% EFF.	WGT. LBS.
1	3600	56	SF561M2D	575	60	TEFC	1.15	1.45	77	34
	3600	143T	SF143T1M2D	575	60	TEFC	1.15	1.45	77	35
	1800	56	SF561M4D	575	60	TEFC	1.15	1.3	85.5	44
	1800	143T	SF143T1M4D	575	60	TEFC	1.15	1.3	85.5	45
	1800	56	SF561M6D	575	60	TEFC	1.15	1.36	82.5	44
	1200	145T	SF145T1M6D	575	60	TEFC	1.15	1.36	82.5	45
1.5	3600	56	SF561.5M2D	575	60	TEFC	1.15	1.6	84	41
	3600	143T	SF143T1.5M2D	575	60	TEFC	1.15	1.6	84	42
	1800	56	SF561.5M4D	575	60	TEFC	1.15	1.8	86.5	49
	1800	145T	SF145T1.5M4D	575	60	TEFC	1.15	1.8	81.8	52
	1200	182T	SF182T1.5M6D	575	60	TEFC	1.15	1.7	87.5	79
2	3600	56	SF562M2D	575	60	TEFC	1.15	2.1	85.5	45
	3600	145T	SF145T2M2D	575	60	TEFC	1.15	2.1	85.5	46
	1800	56	SF562M4D	575	60	TEFC	1.15	2.4	86.5	55
	1800	145T	SF145T2M4D	575	60	TEFC	1.15	2.4	84.2	56
	1200	184T	SF184T2M6D	575	60	TEFC	1.15	2.4	88.5	87
3	3600	182T	SF182T3M2D	575	60	TEFC	1.15	3.0	86.5	78
	1800	182T	SF182T3M4D	575	60	TEFC	1.15	3.4	89.5	93
	1200	213T	SF213T3M6D	575	60	TEFC	1.15	3.4	89.5	123
5	3600	184T	SF184T5M2D	575	60	TEFC	1.15	5.0	88.5	84
	1800	184T	SF184T5M4D	575	60	TEFC	1.15	5.2	89.5	101
	1200	215T	SF215T5M6D	575	60	TEFC	1.15	5.5	89.5	130
7.5	3600	213T	SF213T7.5M2D	575	60	TEFC	1.15	7.6	89.5	91
	1800	213T	SF213T7.5M4D	575	60	TEFC	1.15	8.0	91.7	146
10	3600	215T	SF215T10M2D	575	60	TEFC	1.15	9.6	90.2	135
	1800	215T	SF215T10M4D	575	60	TEFC	1.15	14.2	91.7	165

Totally Enclosed Cast Iron Premium Efficiency Motor

Features:

- HP: 1HP-10HP
- Pole: 2P, 4P, 6P
- Frame: 56-215T
- Cast Iron
- NEMA design: B
- Accept C-Face Kit
- Service factor: 1.15
- Insulation Class: F (UL approved)
- Enclosure: TEFC
- IP Class: IP44
- CSA&CUS certified
- EPACT (CC) & EEV certified

SF56-215T 208-230/460V Three Phase Premium Efficiency Motor Data

HP	RPM 60HZ	NEMA FRAME	Model	Volts	HZ	ENCL.	S.F	Full Load AMPS	% EFF.	WGT. LBS.
1	3600	56	SF561M2A	208-230/460	60	TEFC	1.15	4.0-3.6/1.8	77	40
	3600	143T	SF143T1M2A	208-230/460	60	TEFC	1.15	4.0-3.6/1.8	77	41
	1800	56	SF561M4A	208-230/460	60	TEFC	1.15	3.3-3.0/1.5	85.5	50
	1800	143T	SF143T1M4A	208-230/460	60	TEFC	1.15	3.3-3.0/1.5	85.5	51
	1800	56	SF561M6A	208-230/460	60	TEFC	1.15	3.6-3.4/1.7	82.5	50
	1200	145T	SF145T1M6A	208-230/460	60	TEFC	1.15	3.6-3.4/1.7	82.5	51
1.5	3600	56	SF561.5M2A	208-230/460	60	TEFC	1.15	4.3-4.0/2.0	84.0	47
	3600	143T	SF143T1.5M2A	208-230/460	60	TEFC	1.15	4.3-4.0/2.0	84.0	48
	1800	56	SF561.5M4A	208-230/460	60	TEFC	1.15	4.8-4.4/2.2	86.5	57
	1800	145T	SF145T1.5M4A	208-230/460	60	TEFC	1.15	4.8-4.4/2.2	86.5	60
	1200	182T	SF182T1.5M6A	208-230/460	60	TEFC	1.15	4.8-4.4/2.2	87.5	93
2	3600	56	SF562M2A	208-230/460	60	TEFC	1.15	5.4-5.0/2.5	85.5	53
	3600	145T	SF145T2M2A	208-230/460	60	TEFC	1.15	5.4-5.0/2.5	85.5	54
	1800	56	SF562M4A	208-230/460	60	TEFC	1.15	6.5-6.0/3.0	86.5	59
	1800	145T	SF145T2M4A	208-230/460	60	TEFC	1.15	6.5-6.0/3.0	86.5	64
	1200	184T	SF184T2M6A	208-230/460	60	TEFC	1.15	6.8-6.0/3.0	88.5	99
3	3600	182T	SF182T3M2A	208-230/460	60	TEFC	1.15	8.2-7.6/3.8	86.5	90
	1800	182T	SF182T3M4A	208-230/460	60	TEFC	1.15	8.6-8.0/4.0	89.5	105
	1200	213T	SF213T3M6A	208-230/460	60	TEFC	1.15	9.0-8.4/4.2	89.5	138
5	3600	184T	SF184T5M2A	208-230/460	60	TEFC	1.15	13.0-11.8/5.9	88.5	96
	1800	184T	SF184T5M4A	208-230/460	60	TEFC	1.15	13.5-12.4/6.2	89.5	113
	1200	215T	SF215T5M6A	208-230/460	60	TEFC	1.15	15.0-13.6/6.8	89.5	145
7.5	3600	213T	SF213T7.5M2A	208-230/460	60	TEFC	1.15	20.0-18.4/9.2	89.5	106
	1800	213T	SF213T7.5M4A	208-230/460	60	TEFC	1.15	21.0-19.2/9.6	91.7	161
10	3600	215T	SF215T10M2A	208-230/460	60	TEFC	1.15	26.0-24.0/12.0	90.2	150
	1800	215T	SF215T10M4A	208-230/460	60	TEFC	1.15	27.5-25.2/12.6	91.7	180



SF56-215T 575V Three Phase Premium Efficiency Motor Data

HP	RPM 60HZ	NEMA FRAME	Model	Volts	HZ	ENCL.	S.F	Full Load AMPS	% EFF.	WGT. LBS.
1	3600	56	SF561M2D	575	60	TEFC	1.15	1.45	77	40
	3600	143T	SF143T1M2D	575	60	TEFC	1.15	1.45	77	41
	1800	56	SF561M4D	575	60	TEFC	1.15	1.3	85.5	50
	1800	143T	SF143T1M4D	575	60	TEFC	1.15	1.3	85.5	51
	1800	56	SF561M6D	575	60	TEFC	1.15	1.36	82.5	50
	1200	145T	SF145T1M6D	575	60	TEFC	1.15	1.36	82.5	51
1.5	3600	56	SF561.5M2D	575	60	TEFC	1.15	1.6	84	47
	3600	143T	SF143T1.5M2D	575	60	TEFC	1.15	1.6	84	48
	1800	56	SF561.5M4D	575	60	TEFC	1.15	1.8	86.5	57
	1800	145T	SF145T1.5M4D	575	60	TEFC	1.15	1.8	86.5	60
	1200	182T	SF182T1.5M6D	575	60	TEFC	1.15	1.7	87.5	93
	2	3600	56	SF562M2D	575	60	TEFC	1.15	2.1	85.5
3600		145T	SF145T2M2D	575	60	TEFC	1.15	2.1	85.5	54
1800		56	SF562M4D	575	60	TEFC	1.15	2.4	86.5	59
1800		145T	SF145T2M4D	575	60	TEFC	1.15	2.4	86.5	64
1200		184T	SF184T2M6D	575	60	TEFC	1.15	2.4	88.5	99
3		3600	182T	SF182T3M2D	575	60	TEFC	1.15	3.0	86.5
	1800	182T	SF182T3M4D	575	60	TEFC	1.15	3.4	89.5	105
	1200	213T	SF213T3M6D	575	60	TEFC	1.15	3.4	89.5	138
5	3600	184T	SF184T5M2D	575	60	TEFC	1.15	5.0	88.5	96
	1800	184T	SF184T5M4D	575	60	TEFC	1.15	5.2	89.5	113
	1200	215T	SF215T5M6D	575	60	TEFC	1.15	5.5	89.5	145
7.5	3600	213T	SF213T7.5M2D	575	60	TEFC	1.15	7.6	89.5	106
	1800	213T	SF213T7.5M4D	575	60	TEFC	1.15	8.0	91.7	161
10	3600	215T	SF215T10M2D	575	60	TEFC	1.15	9.6	90.2	150
	1800	215T	SF215T10M4D	575	60	TEFC	1.15	14.2	91.7	180

NEMA EC Motor

Features:

- HP: 1/4HP-1HP
- Frequency: 50/60Hz
- Voltage: 120/208-277V
- Frame: 48
- Rolled steel frame
- Insulation Class F
- Enclosure: ODP, TEAO
- IP Class: IP23, IP55
- CSA&CUS certified



HP	RPM	NEMA FRAME	Model	Volts	ENCL.	BRGS.	Full Load AMPS	WGT. LBS.
1/4	1800	48	ECA481/4S4C	120/208-277	TEAO	BEALL	0.7	11.7
1/3	1800	48	ECA481/3S4C	120/208-277	TEAO	BEALL	0.9	11.7
1/2	1800	48	ECA481/2S4C	120/208-277	TEAO	BEALL	1.4	14.0
3/4	1800	48	ECA483/4S8C	120/208-277	TEAO	BEALL	2.0	14.1
3/4	1800	48	ECA483/4S4C	120/208-277	TEAO	BEALL	2.1	14.5

TENV Motor

Features:

- HP: 1/3HP-10HP
- Pole: 2P, 4P
- Frame: 56-215T
- Rolled steel
- Service factor: 1.0, 1.15
- Insulation Class: F (UL approved)
- Enclosure: TENV
- IP Class: IP44



HP	RPM 60HZ	NEMA FRAME	Model	PH	HZ	Volts	ENCL.	S.F	Full Load AMPS	WGT. LBS.
1/3	1800	56C	N56C1/3M4A	3	60	208-230/460	TENV	1.15	2.01-1.9/0.95	22
	1800	56C	N56C1/3M4D	3	60	575	TENV	1.15	0.76	22
1/2	1800	56	N56 1/2S4C-C-2	1	60	110/230	TENV	1.15	6.87/3.43	30
1	1800	56CZ	N56CZ1S4C	1	60	115/208-230	TENV	1.0	9.28/4.99-4.69	42
1.5	3600	56	N56 1.5M2A	3	60	220	TENV	1.0	4.4	26
	3600	56	N56C1.5S2C	1	60	115/230	TENV	1.0	16.3/8.2	37
	3600	56	N56C1.5M2A	3	60	208-230/460	TENV	1.0	4.66-4.52/2.26	29
3	3600	56	N56 3M2A	3	60	220	TENV	1.0	8.0	33
	1800	145C	N145C3M4A	3	60	208-230/460	TENV	1.15	9-8.2/4.1	44
10	3600	215TC	N215TC10M2A	3	60	208-230/460	TENV	1.0	26.2-24.0/12.0	128
	3600	215TC	N215TC10M2D	3	60	575	TENV	1.0	9.44	128

Resilient Base Motor

Features:

- HP: 1/4HP–2HP
- Pole: 4P
- Capacitor Run
- Frame: 48, 56
- Rolled Steel
- NEMA design N
- Service Factor: 1.0, 1.15, 1.25, 1.35
- Insulation Class: F (UL approved)
- Enclosure: ODP
- IP Class: IP23
- CSA&CUS certified
- Accept Manual or Auto Thermal Protector



HP	RPM	NEMA FRAME	Model	Volts	HZ	ENCL.	BRGS.	S.F	Full Load AMPS	WGT. LBS.
1/4	1800	48	D48 1/4S4C-Y	115/230	60	ODP	SLEEVE	1.0	2.7/1.4	14
	1800	48	D48 1/4S4C-Y	115/230	60	ODP	BALL	1.35	2.8/1.4	14
1/3	1800	48	D48 1/3S4C-Y	115/208-230	60	ODP	SLEEVE	1.35	3.9/2.15-1.95	16
	1800	56	D56 1/3S4C-Y	115/230	60	ODP	BALL	1.35	3.6/1.8	18
1/2	1800	48	D48 1/2S4C-Y	115/230	60	ODP	SLEEVE	1.0	4.7/2.45	19
	1800	56	D56 1/2S4C-Y	115/230	60	ODP	BALL	1.25	4.6/2.3	20
3/4	1800	56	D56 3/4S4C-Y	115/230	60	ODP	BALL	1.15	7.5/3.9	23
1	1800	56	D56 1S4C-Y	115/230	60	ODP	BALL	1.15	9.5/4.7	38
1.5	1800	56	D56 1.5S4C-Y	115/230	60	ODP	BALL	1.15	14.2/7.2	45
2	1800	56	D56 2S4C-Y	115/230	60	ODP	BALL	1.15	17.2/8.7	47

Special Motor



HP	RPM	NEMA FRAME	Model	Volts	PH	HZ	ENCL.	S.F	Full Load AMPS	WGT. LBS.	COMMENTS
1/3	1800/1200	48	A481/4S4C-1/10S6C-U	115	1	60	TEAO	1.0	4.17/2.72	13	Two-Speed Motor
	1800/1200	48	A481/3S4C-1/8S6C-U	115	1	60	TEAO	1.0	5/2.9	13	Two-Speed Motor
1/2	1800	56C	F56C1/2M4A-1	400	3	60	TEFC	1.15	1.24	24	Special Voltage
1	1800	56C	D56C3/4S4C-Y	115	1	60	ODP	1.15	8.6	24	Instant Reversing
	1800	56C	F56C1.5M4A-36V	36	3	60	TEFC	1.15	31.5	30	36V Motor
1.5	3600	56	N562M2A	56	3	60	TENV	1.0	6.0/3.5	40	Cast Iron Motor
	3600	56CZ	F56CZ2M2A	460	3	60	TEFC	1.15	2.65	35	Auto Protector
3	3600	56J	F56J2M2A	460	3	60	TEFC	1.5	2.65	36	Auto Protector
	3600	184JM	EF184JM2M2A	460	3	60	TEFC	2.5	2.75	33	Auto Protector
10	3600	56HC	F56HCZ4S2A	230	1	60	TEFC	1.15	15.5	71	Special Installation
	1800	184TC	F184TC6S4A	230	1	60	TEFC	1.0	24.25	110	Special Installation

Commercial Disposer



Features

HP	RPM	NEMA FRAME	Model	Volts	PHASE	HZ	ENCL.	S.F	Full Load AMPS	WGT. LBS.
1	1800	56NZ	1000-1	115/230	1	50/60	TEFC	1.15	11.6/5.8; 8.3/4.3	19.5
	1800	56NZ	1000-3	208-230/460	3	50/60	TEFC	1.15	4.12/2.06; 3.52/1.76	17
1.5	1800	56NZ	1500-1	115/230	1	50/60	TEFC	1.15	11.0/5.5; 12.4/6.4	23
	1800	56NZ	1500-3	208-230/460	3	50/60	TEFC	1.15	5.6/2.8; 5.3/2.65	23
2	1800	56NZ	2000-1	115/230	1	50/60	TEFC	1.15	18.9/9.4; 15.9/7.94	52
	1800	56NZ	2000-3	208-230/460	3	50/60	TEFC	1.15	7.0/3.5; 6.0/3.0	48
3	1800	182TN	3000-3	115/230	1	50/60	TEFC	1.15	6.8/3.4; 4.8/2.4	82
5	1800	213TN	5000-3	208-230/460	3	50/60	TEFC	1.15	13.4/6.7; 12.6/6.3	110

Application

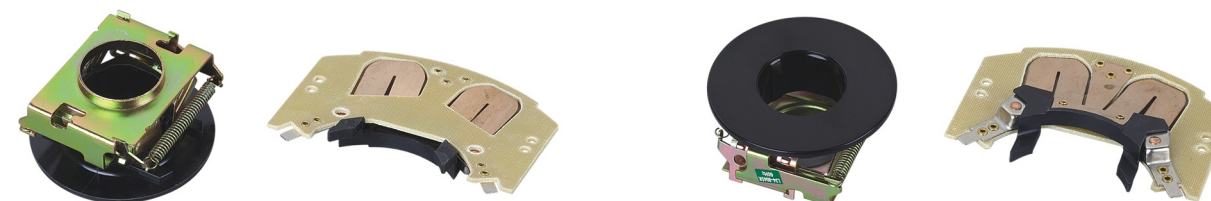
Meals Per Hour	Medium/ Moderate Food Waste Fruit&Vegetable Prep Area, Pot Sinks, Caterers. Hospitals, Pre-rinse Sinks, Coffee Shops and Restaurants, Supermarkets, Banquet Hall
125	1000-1, 1000-3
250	1000-1, 1000-3, 1500-1, 1500-3
800	1500-1, 1500-3
2000	1500-1, 1500-3, 2000-1, 2000-3
3000	2000-1, 2000-3
4000	3000-3
5000	5000-3

Motor Accessories Kits



1. C-FACE KITS FOR TEFC & ODP (STANDARD AND EPACT EFFICIENCY)

Cat.No	FRAME	Motor Used	Note
013292	TEFC 56	KIT F56/1PH/3PH	
013283	TEFC 143T-145T	KIT F140TC/3PH	
013284	ODP 143T-145T	KIT D140TC/3PH	
013285	TEFC 182T-184T	KIT F180TC/3PH	
013286	ODP 182T-184T	KIT D180TC/3PH	
013287	TEFC 213T-215T	KIT F210TC/3PH	
013288	ODP 213T-215T	KIT D210TC/3PH	
013317	TEFC 143T-145T	KIT F140TC/1PH	
013245	TEFC 182T-184T	KIT F180TC/1PH	
013246	TEFC 213T-215T	KIT F210TC/1PH	



2. CENTRIFUGAL SWITCH

Cat.No	FRAME	Motor Used	Note
L20-204Y	56	KIT TEFC 56 4P	
L20-202Y	56	KIT TEFC 56 2P	
L19-204Y	143T-145T	KIT TEFC 140T 4P	
L34-504K	182T-184T	KIT ODP/TEFC 180T4P	
L34-804K	213T-215T	KIT ODP/TEFC 210T4P	

Motor Accessories Kits



3. CAPACITOR START

Cat.No	FRAME	Motor Used	Note
250UF/165V	56	KIT F561/3S2C	
300UF/165V	56	KIT F56(1/2,3/4,1.5)S2C	
350UF/165V	56	KIT F56(1,2)S2C,F561/3S4C	
400UF/165V	56	KIT F561/2S4C	
550UF/165V	56 140T	KIT F56(3/4,1)S4C,F143T1S4C	
600UF/165V	56 140T	KIT F561.5S4C,F145T1.5S4C	
650UF/165V	56 140T	KIT F562S4C,F145T2S4C	
780UF/165V	180T	KIT D184T5S4C	
300UF/250V	180T	KIT F184T(3,5)S4C	
500UF/350V	210T	KIT F215T7.5S4C	
650UF/400V	210T	KIT F215T10S4C	



4. CAPACITOR RUN

Cat.No	FRAME	Motor Used	Note
4UF/370V	48	KIT 1/5S8C	
5UF/370V	48	KIT 1/8S8C 1/5S6C	
10UF/370V	48	KIT 1/4S6C	
15UF/370V	48	KIT 1/2S6C	
20UF/450V	180T	KIT 184T3S4C	
30UF/450V	56 180T	KIT 563/4S6C,F1845S4C	
30UF/500V	180T	KIT D184T5S4C	
35UF/250V	56	KIT F561/3S2C	
40UF/250V	56	KIT F561/3S4C,F561/2S2C	
40UF/500V	210T	KIT F215T7.5S4C	
50UF/250V	56	KIT F56(3/4,1)S2C,F561/2S4C	
60UF/250V	56 140T	KIT F56(3/4,1)S4C,F140T1S4C	
60UF/450V	210T	KIT F215T10S4C	
80UF/250V	56 140T	KIT 56,140(1,1.5)S4C,F562S2C	

Motor Colour

